

COHERE STUDY-Results Tables

Included patients

Total number of patients: 67659

For initial analyses, included individuals are required to have pre-cART (baseline) CD4 count and viral load measurements, both of which are measured in the window 6 months before to 7 days after starting cART (nearest measurement to date of starting cART taken as baseline value)

Number with no baseline VL or no baseline CD4: 14625

Each individual's follow-up is censored at the date of the last CD4, CD4 percentage or viral load measurement (whichever is latest). As, for preliminary analyses, all individuals must have at least one follow-up CD4 measurement and at least one follow-up viral load measurement, all individuals have follow-up of greater than 0 years.

Number with no VL follow-up measurement or no CD4 follow-up measurement: 3113

Number included in initial analyses for CROI abstract (need baseline CD4 count and VL plus at least one follow-up viral load and at least one follow-up CD4 count): 49921

Table 1- Comparison of included and excluded patients

		Included patients	Patients without baseline CD4 count and viral load	Patients with baseline CD4 and viral load, but no follow-up
Total		49921	14629	3113
Age group	<2	223 (0.5%)	134 (0.9%)	8 (0.3%)
	2 to 5	184 (0.4%)	80 (0.5%)	6 (0.2%)
	6 to 12	219 (0.4%)	101 (0.7%)	6 (0.2%)
	13 to 17	201 (0.4%)	73 (0.5%)	6 (0.2%)
	18 to 29	9134 (18.3%)	2587 (17.7%)	553 (17.8%)
	30 to 39	22410 (44.9%)	7029 (48.1%)	1356 (43.6%)
	40 to 49	11588 (23.2%)	3181 (21.8%)	787 (25.3%)
	50 to 54	2693 (5.4%)	664 (4.5%)	157 (5.0%)
	55 to 59	1656 (3.3%)	368 (2.5%)	113 (3.6%)
	60+	1613 (3.2%)	408 (2.8%)	121 (3.9%)
Year of cART	1997	-	5 (0.0%)	-
	1998, 1999	15278 (30.6%)	5568 (38.1%)	546 (17.5%)
	2000, 2001	13447 (26.9%)	3764 (25.7%)	537 (17.3%)
	2002, 2003	12280 (24.6%)	3256 (22.3%)	571 (18.3%)
	2004, 2005, 2006	8916 (17.9%)	2032 (13.9%)	1459 (46.9%)
Baseline CD4	Median (IQR; range)	210 (91, 338, 1, 8184)	-	191 (82, 304; 0, 2916)
Baseline CD4%	Median (IQR; range)	14 (8, 21; 0, 98) (n=19912)	-	13 (8, 20; 0, 58) (n=990)
Baseline VL	Median (IQR; range)	4.9 (4.3, 5.4, 1.7, 8.5)	-	4.8 (4.1, 5.3; 1.7, 7.7)
AIDS	Yes	12997 (26.0%)	4627 (31.6%)	852 (27.4%)
	No	36921 (74.0%)	9989 (68.3%)	2261 (72.6%)
	Unknown	3 (0.0%)	9 (0.1%)	0 (0.0%)
Gender	Male	35693 (71.5%)	10434 (71.3%)	2200 (70.7%)
	Female	14228 (28.5%)	4191 (28.7%)	913 (29.3%)
Mode	Homo/bisexual	15780 (31.6%)	3436 (23.5%)	712 (22.9%)

	Injecting drug	7541 (15.1%)	3738 (25.6%)	656 (21.1%)
	Heterosexual	20233 (40.5%)	4826 (33.0%)	1211 (38.9%)
	Perinatal	652 (1.3%)	321 (2.2%)	21 (0.7%)
	Other	2355 (4.7%)	740 (5.1%)	190 (6.1%)
	Unknown	3360 (6.7%)	1554 (10.7%)	323 (10.4%)
Origin	Africa (unspecified)	979 (2.0%)	251 (1.7%)	70 (2.3%)
	Northern Africa	416 (0.8%)	76 (0.5%)	24 (0.8%)
	Sub-Saharan Africa	5379 (10.8%)	894 (6.1%)	308 (9.9%)
	Europe (unspecified)	5794 (11.6%)	2859 (19.6%)	317 (10.2%)
	Western Europe	24628 (49.3%)	5914 (40.4%)	1377 (44.2%)
	Eastern Europe	233 (0.5%)	58 (0.4%)	32 (1.0%)
	Other	2785 (5.6%)	782 (5.4%)	250 (8.0%)
	Unknown	9707 (19.4%)	3791 (25.9%)	735 (23.6%)
NNRTIs received	NVP	9511 (19.0%)	3039 (20.8%)	561 (18.0%)
	EFV	11621 (23.3%)	2362 (16.2%)	752 (24.2%)
PIs received	IDV	6957 (13.9%)	2665 (18.2%)	336 (10.8%)
	NFV	9540 (19.1%)	3170 (21.7%)	367 (11.8%)
	LPV	6458 (12.9%)	1655 (11.3%)	577 (18.5%)
	RTV	11729 (23.5%)	2943 (20.1%)	961 (30.9%)
NRTIs received	AZT	31181 (62.5%)	8141 (55.7%)	1634 (52.5%)
	ddI	8182 (16.4%)	2604 (17.8%)	479 (15.4%)
	d4T	11793 (23.6%)	4845 (33.1%)	573 (18.4%)
	3TC	42285 (84.7%)	12210 (83.5%)	2560 (82.2%)
	ABA	6147 (12.3%)	1487 (10.2%)	433 (13.9%)
	FTC	980 (2.0%)	120 (0.8%)	222 (7.1%)
	TDF	4295 (8.6%)	912 (6.2%)	641 (20.6%)
# drugs	3	36693 (73.5%)	11472 (78.4%)	2100 (67.5%)
	4	11971 (24.0%)	2864 (19.6%)	934 (30.0%)

	>5	1257 (2.5%)	289 (2.0%)	79 (2.5%)
Starting regimen	1PI +2NRTI	14027 (28.1%)	5454 (37.3%)	640 (20.6%)
	1PI+RTV+2NRTI	9705 (19.4%)	2371 (16.2%)	831 (26.6%)
	1NNRTI+2NRTI	18710 (37.5%)	4843 (33.1%)	1204 (38.7%)
	Other	7479 (15.0%)	1957 (13.4%)	438 (14.1%)

Table 2 – Patient characteristics at the time of starting cART according to age group

		<2	2 to 5	6 to 12	13 to 17	18 to 29	30 to 39	40 to 49	50 to 54	55 to 59	60+
Total		223	184	219	201	9134	22410	11588	2693	1656	1613
Age	Median (IQR; range)	0.4 (0.3, 0.9) (0.0, 2.0)	3.8 (2.9, 4.8) (2.0, 6.0)	8.8 (7.5, 10.6) (6.0, 12.8)	16.5 (15.2, 17.4) (13.0, 18.0)	26.9 (24.5, 28.6) (18.0, 30.0)	35.1 (32.7, 37.4) (30.0, 40.0)	43.6 (41.6, 46.3) (40.0, 50.0)	52.2 (51.1, 53.6) (50.0, 55.0)	57.1 (56.0, 58.4) (55.0, 60.0)	64.5 (62.1, 68.4) (60.0, 87.3)
Year of cART	1998, 1999	66 (29.6)	57 (31.0)	47 (21.5)	28 (13.9)	2893 (31.7)	7565 (33.8)	2983 (25.7)	758 (28.2)	447 (27.0)	434 (27.0)
	2000, 2001	68 (30.5)	40 (21.7)	43 (19.6)	60 (29.9)	2480 (27.2)	6220 (27.8)	2987 (25.8)	725 (26.9)	430 (26.0)	394 (24.4)
	2002, 2003	53 (23.8)	52 (28.3)	66 (30.1)	62 (30.9)	2125 (23.3)	5178 (23.1)	3176 (27.4)	705 (26.2)	450 (27.2)	413 (25.6)
	2004, 2005, 2006	36 (16.1)	35 (19.0)	63 (28.8)	51 (25.4)	1636 (17.9)	3447 (15.4)	2442 (21.1)	505 (18.8)	329 (19.9)	372 (23.1)
Baseline CD4	Median (IQR; range)	1168 (480, 1980) (10, 8184)	496 (255, 742) (0, 1900)	225 (98, 402) (0, 1210)	222 (110, 340) (1, 1180)	256 (141, 401) (1, 2000)	210 (90, 337) (1, 4560)	188 (78, 301) (0, 2010)	178 (69, 295) (0, 2000)	178 (74, 297) (0, 1370)	173 (70, 282) (0, 2730)
Baseline CD4%	Median (IQR; range)	25 (15, 34) (1, 78)	14 (8, 20) (1, 43)	10 (5, 16) (0, 48)	15 (8, 20) (0, 37)	17 (10, 24) (0, 73)	15 (8, 21) (0, 98)	13 (7, 19) (0, 78)	12 (7, 18) (0, 46)	12 (7, 18) (0, 91)	12 (7, 18) (0, 77)
Baseline VL	Median (IQR; range)	5.6 (5.0, 5.9) (1.8, 7.4)	5.2 (4.7, 5.6) (1.7, 6.5)	4.9 (4.3, 5.2) (1.7, 6.4)	4.8 (4.0, 5.2) (1.7, 6.3)	4.8 (4.2, 5.3) (1.7, 7.9)	4.9 (4.3, 5.4) (1.7, 8.3)	5.0 (4.4, 5.4) (1.7, 8.5)	5.0 (4.5, 5.5) (1.7, 7.7)	5.0 (4.6, 5.5) (1.7, 7.7)	5.1 (4.5, 5.5) (1.7, 6.8)
AIDS	Yes	94 (42.2)	50 (27.2)	42 (19.2)	54 (26.9)	1657 (18.1)	5727 (25.6)	3412 (29.4)	896 (33.3)	526 (31.8)	539 (33.4)
	No	129 (57.9)	134 (72.8)	177 (80.8)	145 (72.1)	7476 (81.9)	16683 (74.4)	8176 (70.6)	1797 (66.7)	1130 (68.2)	1074 (66.6)
	Unknown	0 (0.0)	0 (0.0)	0 (0.0)	2 (1.0)	1 (0.0)	0 (0.0)	0 (0.0)	0 (0.0)	0 (0.0)	0 (0.0)
Gender	Male	99 (44.4)	108 (58.7)	120 (54.8)	75 (37.3)	4996 (54.7)	16171 (72.2)	9255 (79.9)	2223 (82.6)	1353 (81.7)	1293 (80.2)
	Female	124 (55.6)	76 (41.3)	99 (45.2)	126 (62.7)	4138 (45.3)	6239 (27.8)	2333 (20.1)	470 (17.5)	303 (18.3)	320 (19.8)
Mode	Homo/bisexual	0 (0.0)	0 (0.0)	0 (0.0)	5 (2.5)	2590 (28.4)	7054 (31.5)	3998 (34.4)	1051 (39.0)	584 (35.3)	508 (31.5)
	Injecting drug	0 (0.0)	0 (0.0)	0 (0.0)	8 (4.0)	964 (10.6)	4610 (20.6)	1840 (15.9)	99 (3.7)	13 (0.8)	7 (0.4)
	Heterosexual	0 (0.0)	1 (0.5)	0 (0.0)	76 (37.8)	4579 (50.1)	8332 (37.2)	4425 (38.2)	1182 (43.9)	809 (48.9)	829 (51.4)
	Perinatal	218 (97.8)	173 (94.0)	194 (88.6)	56 (27.9)	11 (0.1)	0 (0.0)	0 (0.0)	0 (0.0)	0 (0.0)	0 (0.0)
	Other	0 (0.0)	2 (1.1)	11 (5.0)	22 (11.0)	444 (4.9)	1115 (5.0)	520 (4.5)	96 (3.6)	74 (4.5)	71 (4.4)
	Unknown	5 (2.2)	8 (4.4)	14 (6.4)	34 (16.9)	546 (6.0)	1299 (5.8)	815 (7.0)	265 (9.8)	176 (10.6)	198 (12.3)
Origin	Africa (unspecified)	3 (1.4)	2 (1.1)	12 (5.5)	5 (2.5)	310 (3.4)	454 (2.0)	158 (1.4)	17 (0.7)	11 (0.7)	7 (0.4)
	Northern Africa	5 (2.2)	0 (0.0)	1 (0.5)	0 (0.0)	63 (0.7)	155 (0.7)	109 (0.9)	27 (1.0)	28 (1.7)	28 (1.7)

	Sub-Saharan Africa	43 (19.3)	79 (42.9)	112 (51.1)	104 (51.7)	1685 (18.5)	2155 (9.6)	859 (7.4)	185 (6.9)	77 (4.7)	80 (5.0)
	Europe (unspecified)	3 (1.4)	2 (1.1)	2 (0.9)	7 (3.5)	1033 (11.3)	2677 (12.0)	1378 (11.9)	290 (10.8)	193 (11.7)	209 (13.0)
	Western Europe	158 (70.9)	91 (49.5)	77 (35.2)	50 (24.9)	3443 (37.7)	10757 (48.0)	6360 (54.9)	1636 (60.6)	1042 (62.9)	1014 (62.9)
	Eastern Europe	0 (0.0)	0 (0.0)	4 (1.8)	1 (0.5)	81 (0.9)	73 (0.3)	43 (0.4)	15 (0.6)	8 (0.5)	8 (0.5)
	Other	7 (3.1)	6 (3.3)	5 (2.3)	14 (7.0)	693 (7.6)	1265 (5.6)	578 (5.0)	113 (4.2)	54 (3.3)	50 (3.1)
	Unknown	4 (1.8)	4 (2.2)	6 (2.7)	20 (10.0)	1826 (20.0)	4874 (21.8)	2103 (18.2)	410 (15.2)	243 (14.7)	217 (13.5)
NNRTIs received	NVP	105 (47.1)	59 (32.1)	46 (21.0)	40 (19.9)	1923 (21.1)	4388 (19.6)	1953 (16.9)	422 (15.7)	284 (17.2)	291 (18.0)
	EFV	8 (3.6)	43 (23.4)	82 (37.4)	60 (29.9)	1925 (21.1)	5026 (22.4)	2951 (25.5)	656 (24.4)	454 (27.4)	416 (25.8)
PIs received	IDV	6 (2.7)	3 (1.6)	3 (1.4)	9 (4.5)	1244 (13.6)	3441 (15.4)	1461 (12.6)	381 (14.2)	218 (13.2)	191 (11.8)
	NFV	69 (30.9)	44 (23.9)	41 (18.7)	46 (22.9)	2017 (22.1)	4374 (19.5)	1908 (16.5)	480 (17.8)	272 (16.4)	289 (17.9)
	LPV	33 (14.8)	20 (10.9)	34 (15.5)	23 (11.4)	1026 (11.2)	2538 (11.3)	1858 (16.0)	427 (15.9)	258 (15.6)	241 (14.9)
	RTV	43 (19.3)	27 (14.7)	39 (17.8)	37 (18.4)	1898 (20.8)	4847 (21.6)	3193 (27.6)	784 (29.1)	454 (27.4)	407 (25.2)
NRTIs received	AZT	114 (51.1)	94 (51.1)	110 (50.2)	130 (64.7)	6034 (66.1)	13764 (61.4)	7147 (61.7)	1713 (63.6)	1072 (64.7)	1003 (62.2)
	Ddl	58 (26.0)	25 (13.6)	25 (11.4)	17 (8.5)	1482 (16.2)	3850 (17.2)	1821 (15.7)	423 (15.7)	238 (14.4)	243 (15.1)
	d4T	81 (36.3)	40 (21.7)	46 (21.0)	35 (17.4)	2072 (22.7)	5745 (25.6)	2472 (21.3)	583 (21.7)	373 (22.5)	346 (21.5)
	3TC	167 (74.9)	157 (85.3)	189 (86.3)	184 (91.5)	7755 (84.9)	18803 (83.9)	9905 (85.5)	2313 (85.9)	1418 (85.6)	1394 (86.4)
	ABA	82 (36.8)	78 (42.4)	94 (42.9)	43 (21.4)	945 (10.4)	2623 (11.7)	1533 (13.2)	342 (12.7)	190 (11.5)	217 (13.5)
	FTC	0 (0.0)	0 (0.0)	0 (0.0)	3 (1.5)	169 (1.9)	374 (1.7)	296 (2.6)	56 (2.1)	38 (2.3)	44 (2.7)
	TDF	0 (0.0)	1 (0.5)	1 (0.5)	14 (7.0)	656 (7.2)	1807 (8.1)	1277 (11.0)	237 (8.8)	135 (8.2)	167 (10.4)
# drugs	3	132 (59.2)	146 (79.4)	169 (77.2)	158 (78.6)	6964 (76.3)	16936 (75.6)	8073 (69.7)	1825 (67.8)	1154 (69.7)	1136 (70.4)
	4	87 (39.0)	35 (19.0)	47 (21.5)	40 (19.9)	1981 (21.7)	4942 (22.1)	3180 (27.4)	782 (29.0)	441 (26.6)	436 (27.0)
	>5	4 (1.8)	3 (1.6)	3 (1.4)	3 (1.5)	189 (2.1)	532 (2.4)	335 (2.9)	86 (3.2)	61 (3.7)	41 (2.5)
Regimen type	1PI+2NRTI	71 (31.8)	50 (27.2)	42 (19.2)	47 (23.4)	2820 (30.9)	6760 (30.2)	2770 (23.9)	691 (25.7)	394 (23.8)	382 (23.7)
	1PI+RTV+2NRTI	30 (13.5)	18 (9.8)	33 (15.1)	29 (14.4)	1610 (17.6)	3975 (17.7)	2663 (23.0)	640 (23.8)	363 (21.9)	344 (21.3)
	1NNRTI+2NRTI	53 (23.8)	81 (44.0)	114 (52.1)	88 (43.8)	3448 (37.8)	8403 (37.5)	4333 (37.4)	931 (34.6)	636 (38.4)	623 (38.6)
	Other	69 (30.9)	35 (19.0)	30 (13.7)	37 (18.4)	1256 (13.8)	3272 (14.6)	1822 (15.7)	431 (16.0)	263 (15.9)	264 (16.4)

Figure 3: Time to discontinuation/switch of first (any) antiretroviral

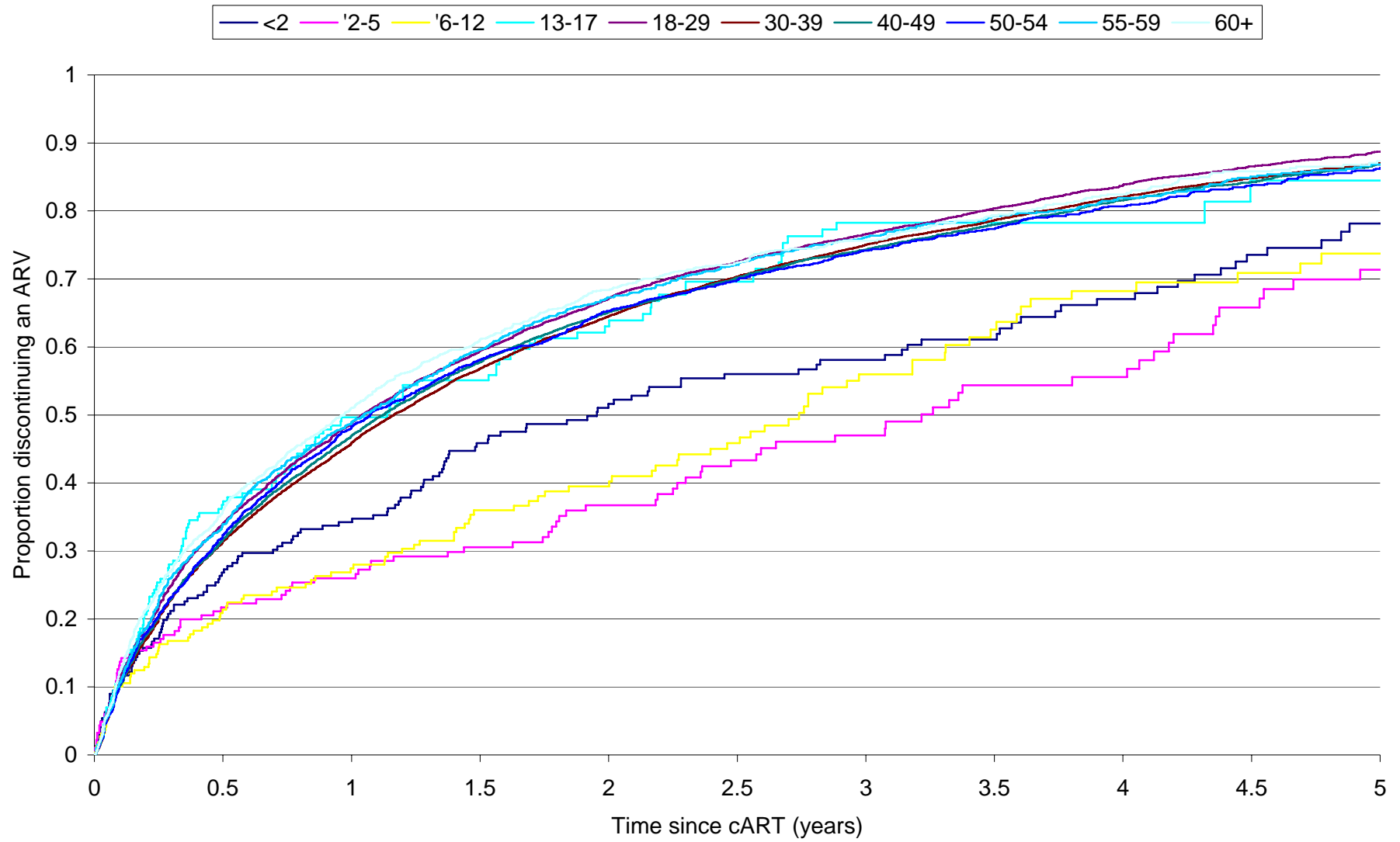


Table 4- Percentage discontinuing/switching at least one antiretroviral according to age group

	Percentage (95% CI) discontinued at least one ARV					Number with event	Number in group
	6 months	12 months	18 months	24 months	30 months		
<2	26.8 21.0, 32.7	34.2 27.9, 40.6	45.8 39.0, 52.7	51.6 44.6, 58.6	56.0 48.9, 63.1	148	223
2 to 5	21.7 15.7, 27.7	26.0 19.5, 32.5	30.5 23.6, 37.4	36.7 29.2, 44.2	43.3 35.3, 51.3	104	184
6 to 12	21.3 15.8, 26.9	27.4 21.3, 33.6	36.0 29.1, 42.9	39.5 32.3, 46.6	45.8 38.2, 53.5	117	219
13 to 17	36.7 29.9, 43.6	49.7 42.4, 56.9	55.1 47.7, 62.5	63.0 55.5, 70.6	69.6 62.0, 77.2	131	201
18 to 29	34.0 33.0, 35.0	48.9 47.8, 49.9	59.4 58.3, 60.4	67.2 66.1, 68.2	72.5 71.5, 73.5	6608	9134
30 to 39	31.4 30.8, 32.0	45.9 45.2, 46.6	56.8 56.1, 57.5	64.5 63.8, 65.2	70.3 69.7, 71.0	16252	22410
40 to 49	31.7 30.8, 32.6	46.9 46.0, 47.9	57.7 56.8, 58.7	65.1 64.1, 66.1	70.2 69.2, 71.1	8001	11588
50 to 54	32.3 30.5, 34.1	48.3 46.3, 50.3	58.1 56.1, 60.1	65.3 63.3, 67.3	69.9 67.9, 71.8	1888	2693
55 to 59	33.9 31.5, 36.2	48.9 46.4, 51.5	59.6 57.1, 62.1	67.3 64.8, 69.8	72.1 69.7, 74.5	1180	1656
60+	36.0 33.6, 38.3	51.1 48.5, 53.6	61.1 58.5, 63.6	68.4 65.8, 70.9	72.4 69.9, 75.0	1118	1613

Kaplan Meier estimates

Table 5- Factors associated with first antiretroviral discontinuation/switch

		Univariable analysis			Multivariable analysis		
		Hazard ratio	95% CI	p-value	Hazard ratio	95% CI	p-value
Age group	6 to 12	0.61	0.51, 1.74	<0.0001	0.60	0.50, 0.72	<0.0001
	13 to 17	1.06	0.89, 1.26	0.52	0.99	0.83, 1.17	0.88
	18 to 29	1.07	1.04, 1.10	<0.0001	1.06	1.03, 1.09	0.0003
	30 to 39	1.00	-		1.00	-	
	40 to 49	1.00	0.98, 1.03	0.73	1.00	0.97, 1.03	0.85
	50 to 54	1.01	0.96, 1.05	0.86	0.99	0.94, 1.04	0.69
	55 to 59	1.05	0.99, 1.12	0.09	1.05	0.99, 1.12	0.08
	60+	1.09	1.03, 1.16	0.005	1.07	1.01, 1.14	0.02
Year of cART	1998, 1999	0.96	0.93, 0.98	0.002	0.94	0.91, 0.97	0.0002
	2000, 2001	0.94	0.92, 0.97	<0.0001	0.96	0.94, 0.99	0.02
	2002, 2003	1.00	-		1.00	-	
	2004-2006	1.03	0.99, 1.07	0.14	1.06	1.02, 1.10	0.005
Baseline CD4	<100	1.20	1.17, 1.24	<0.0001	1.06	1.03, 1.09	0.0004
	100-200	1.07	1.03, 1.10	<0.0001	1.02	0.99, 1.08	0.16
	200-350	1.00	-		1.00	-	
	350-500	1.03	0.99, 1.07	0.10	1.05	1.01, 1.09	0.009
	>500	1.10	1.05, 1.14	<0.0001	1.11	1.07, 1.15	<0.0001
Baseline VL	<5 log	0.93	0.91, 0.95	<0.0001	0.96	0.94, 0.98	0.0003
	5-6	1.00	-		1.00	-	
	>6 log	1.13	1.06, 1.19	<0.0001	1.07	1.01, 1.13	0.02
AIDS	Yes	1.25	1.22, 1.28	<0.0001	1.21	1.18, 1.24	<0.0001
	No/unknown	1.00	-		1.00	-	
Gender	Male	0.88	0.86, 0.90	<0.0001	0.87	0.85, 0.89	<0.0001
	Female	1.00	-		1.00	-	
Origin	Africa	1.07	1.04, 1.11	<0.0001	1.03	1.00, 1.07	0.05
	Europe	1.00	-		1.00	-	
	Other/Unknown	0.97	0.95, 0.99	0.01	1.02	0.99, 1.04	0.23
Regimen	1 PI+2 NRTI	1.36	1.32, 1.39	<0.0001	1.36	1.32, 1.40	<0.0001
	1 NNRTI+2 NRTI	1.00	-		1.00	-	
	1 PI/RTV + 2 NRTI	1.52	1.47, 1.57	<0.0001	1.44	1.39, 1.48	<0.0001
	Other	1.65	1.60, 1.71	<0.0001	1.65	1.60, 1.71	<0.0001

Results from Cox proportional hazards model. Children aged 0 to <2 and 2 to <6 not included in model as CD4 cell counts differ for these age groups. Did not include mode of infection due to high co-linearity with age group

Figure 6: Time to first discontinuation of all ART for at least 2 weeks

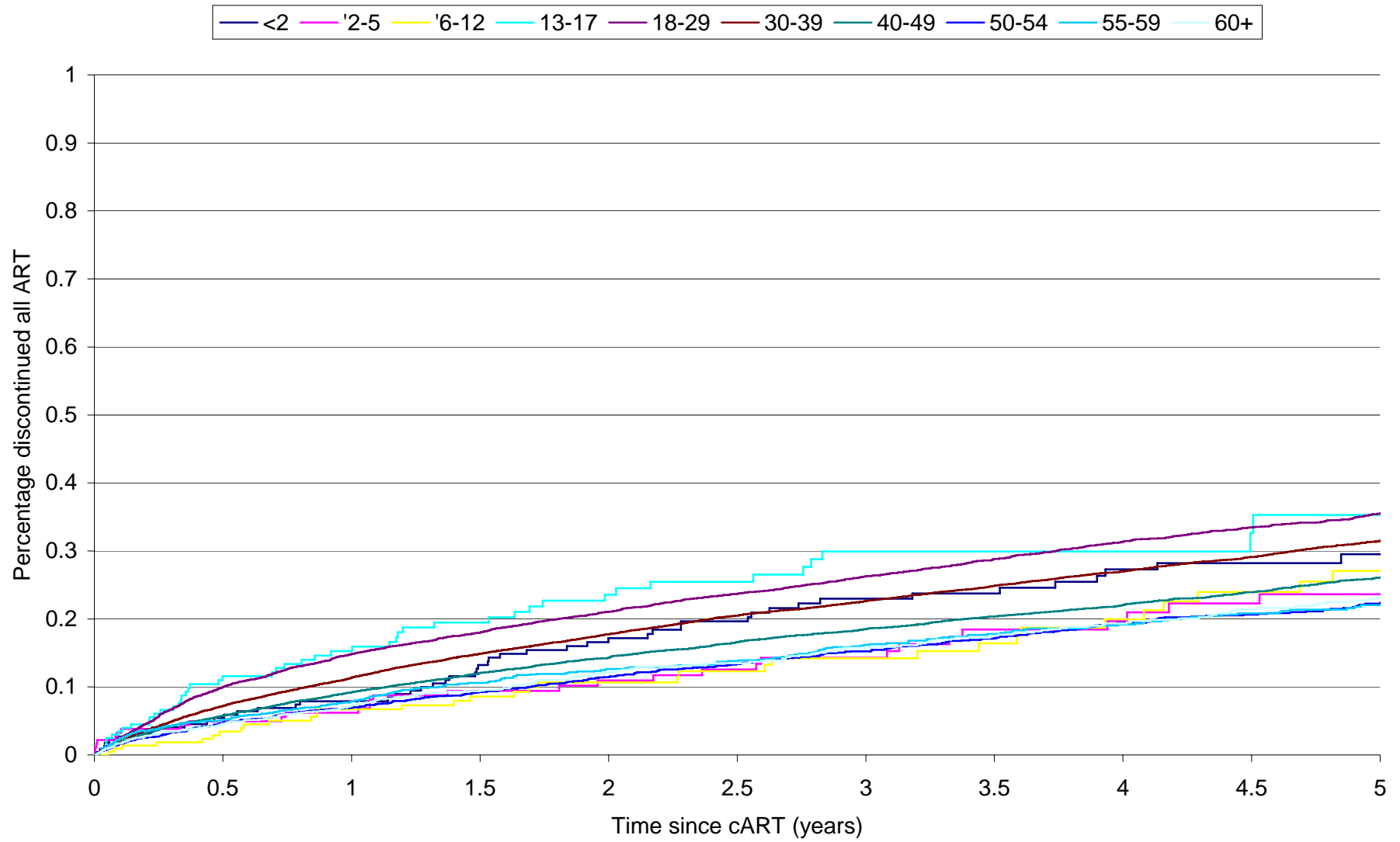


Table 7- Percentage discontinuing all ART for at least 2 weeks

	Percentage (95% CI) discontinued all ART					Number with event	Number in group
	6 months	12 months	18 months	24 months	30 months		
<2	5.5 2.5, 8.5	7.9 4.2, 11.5	13.2 8.5, 17.9	17.2 11.9, 22.5	19.6 14.0, 25.3	64	223
2 to 5	5.0 1.8, 8.2	6.2 2.7, 9.8	9.4 5.0, 13.9	11.0 6.1, 15.8	12.6 7.3, 17.8	37	184
6 to 12	3.4 0.9, 5.9	6.7 3.2, 10.3	8.6 4.5, 12.6	10.7 6.1, 15.2	12.3 7.3, 17.4	39	219
13 to 17	11.6 7.0, 16.1	15.3 10.0, 20.5	19.5 13.5, 25.4	23.6 16.9, 30.3	25.5 18.5, 32.5	50	201
18 to 29	10.0 9.3, 10.6	14.8 14.1, 15.6	18.0 17.2, 18.8	21.0 20.1, 22.0	23.7 22.7, 24.7	2449	9134
30 to 39	7.2 6.9, 7.5	11.4 11.0, 11.8	14.9 14.4, 15.4	17.8 17.2, 18.3	20.5 19.9, 21.1	5420	22410
40 to 49	5.8 5.3, 6.2	9.2 8.7, 9.8	12.0 11.4, 12.7	14.3 13.6, 15.0	16.6 15.8, 17.4	2157	11588
50 to 54	4.7 3.9, 5.5	6.9 5.9, 7.9	9.2 8.1, 10.4	11.4 10.1, 12.8	13.4 11.9, 14.8	436	2693
55 to 59	5.2 4.1, 6.3	7.9 6.5, 9.2	10.6 9.0, 12.2	12.6 10.9, 14.4	13.8 12.0, 15.6	276	1656
60+	4.6 3.5, 5.6	7.3 5.9, 8.6	9.4 7.9, 10.9	12.2 10.4, 14.0	13.5 11.6, 15.4	252	1613

Kaplan Meier estimates

Table 8- Factors associated with discontinuing all ART for at least 2 weeks

		Univariable analysis			Multivariable analysis		
		Hazard ratio	95% CI	p-value	Hazard ratio	95% CI	p-value
Age group	6 to 12	0.77	0.56, 1.05	0.10	0.81	0.59, 1.12	0.20
	13 to 17	1.34	1.02, 1.77	0.04	1.31	0.99, 1.73	0.06
	18 to 29	1.20	1.14, 1.26	<0.0001	1.11	1.06, 1.17	<0.0001
	30 to 39	1.00	-		1.00	-	
	40 to 49	0.80	0.76, 0.84	<0.0001	0.83	0.79, 0.87	<0.0001
	50 to 54	0.66	0.59, 0.72	<0.0001	0.71	0.64, 0.78	<0.0001
	55 to 59	0.68	0.61, 0.77	<0.0001	0.74	0.66, 0.83	<0.0001
	60+	0.67	0.59, 0.76	<0.0001	0.73	0.64, 0.82	<0.0001
Year of cART	1998, 1999	0.82	0.78, 0.87	<0.0001	0.74	0.70, 0.78	<0.0001
	2000, 2001	0.88	0.83, 0.92	<0.0001	0.83	0.78, 0.87	<0.0001
	2002, 2003	1.00	-		1.00	-	
	2004-2006	0.93	0.86, 1.01	0.07	1.02	0.94, 1.10	0.69
Baseline CD4	<100	0.76	0.72, 0.80	<0.0001	0.76	0.72, 0.81	<0.0001
	100-200	0.92	0.87, 0.97	0.003	0.92	0.87, 0.98	0.004
	200-350	1.00	-		1.00	-	
	350-500	1.17	1.10, 1.24	<0.0001	1.22	1.15, 1.29	<0.0001
	>500	1.55	1.46, 1.64	<0.0001	1.59	1.50, 1.69	<0.0001
Baseline VL	<5 log	1.27	1.23, 1.32	<0.0001	1.11	1.06, 1.16	<0.0001
	5-6	1.00	-		1.00	-	
	>6 log	1.01	0.91, 1.13	0.86	1.05	0.94, 1.17	0.43
AIDS	Yes	0.91	0.88, 0.95	<0.0001	1.16	1.11, 1.22	<0.0001
	No/unknown	1.00	-		1.00	-	
Gender	Male	0.82	0.79, 0.86	<0.0001	0.86	0.83, 0.90	<0.0001
	Female	1.00	-		1.00	-	
Origin	Africa	1.04	0.98, 1.11	0.23	0.95	0.89, 1.01	0.12
	Europe	1.00	-		1.00	-	
	Other/Unknown	1.79	1.72, 1.87	<0.0001	1.78	1.70, 1.85	<0.0001
Regimen	1 PI+2 NRTI	0.90	0.86, 0.94	<0.0001	1.04	0.99, 1.09	0.11
	1 NNRTI+2 NRTI	1.00	-		1.00	-	
	1 PI/RTV + 2 NRTI	0.89	0.84, 0.94	<0.0001	1.01	0.95, 1.08	0.68
	Other	0.97	0.92, 1.03	0.33	1.03	0.97, 1.09	0.29

Results from Cox proportional hazards model. Children aged 0 to <2 and 2 to <6 not included in model as CD4 cell counts differ for these age groups. Did not include mode of infection due to high co-linearity with age group

Figure 9- Time to first single viral load <50 copies/ml

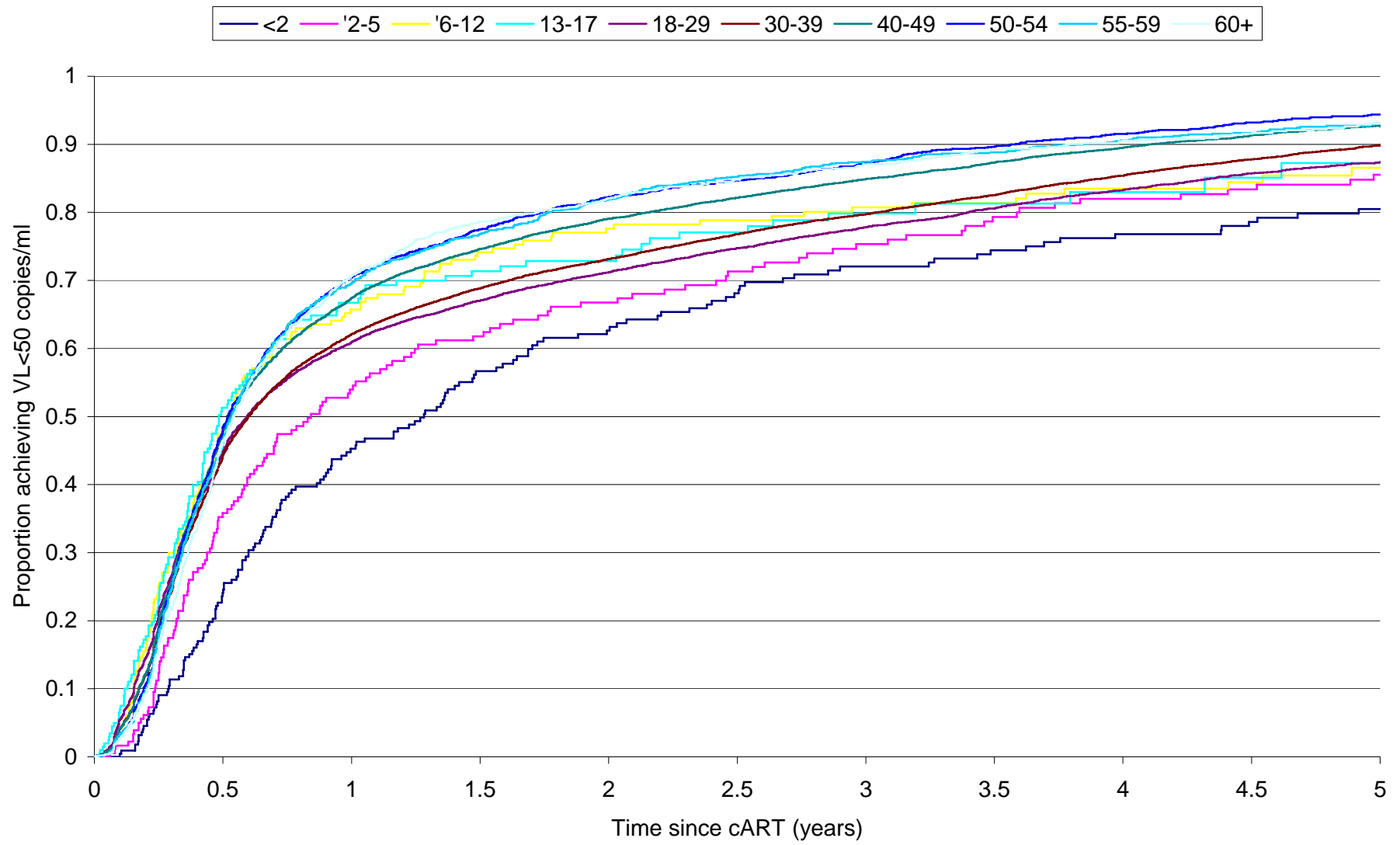


Table 10- Percentages achieving a single viral load <50 copies/ml according to age group

	Percentage (95% CI) achieving a viral load <50 copies/ml					Number with event	Number in group
	6 months	12 months	18 months	24 months	30 months		
<2	24.1 18.4, 29.8	45.3 38.5, 52.0	56.7 49.8, 63.5	62.6 55.9, 69.4	68.1 61.6, 74.7	167	223
2 to 5	35.8 28.7, 42.9	54.0 46.5, 61.4	61.8 54.5, 69.1	66.7 59.6, 73.9	71.3 64.4, 78.2	146	184
6 to 12	48.4 41.5, 55.2	65.7 59.1, 72.4	74.1 67.9, 80.4	77.6 71.6, 83.6	78.8 73.0, 84.7	173	219
13 to 17	51.3 44.2, 58.4	66.7 59.8, 73.6	71.4 64.6, 78.1	72.8 66.2, 79.5	77.1 70.5, 83.7	148	201
18 to 29	44.9 43.8, 46.0	60.9 59.9, 62.0	67.0 66.0, 68.0	71.2 70.2, 72.2	74.7 73.8, 75.7	7056	9134
30 to 39	44.3 43.6, 44.9	62.1 61.4, 62.8	68.8 68.2, 69.4	73.1 72.5, 73.8	76.8 76.2, 77.4	17865	22410
40 to 49	47.8 46.8, 48.7	67.4 66.5, 68.3	74.6 73.8, 75.5	79.1 78.3, 79.9	82.1 81.4, 82.9	9452	11588
50 to 54	48.4 46.5, 50.3	70.5 68.7, 72.3	77.5 75.8, 79.2	82.3 80.7, 83.8	84.7 83.2, 86.2	2265	2693
55 to 59	46.0 43.6, 48.5	69.6 67.3, 71.9	76.8 74.7, 79.0	81.9 79.9, 83.9	85.2 83.4, 87.1	1388	1656
60+	46.4 43.9, 49.0	70.7 68.3, 73.0	78.6 76.5, 80.8	82.1 80.0, 84.1	84.8 82.8, 86.8	1305	1613

Kaplan Meier estimates. Disregarding treatment changes and discontinuations

Table 11- Factors associated with achieving a single viral load <50 copies/ml

		Univariable analysis			Multivariable analysis		
		Hazard ratio	95% CI	p-value	Hazard ratio	95% CI	p-value
Age group	6 to 12	1.06	0.91, 1.23	0.45	0.87	0.75, 1.01	0.07
	13 to 17	1.09	0.93, 1.29	0.28	0.86	0.73, 1.01	0.07
	18 to 29	0.97	0.94, 0.99	0.01	0.93	0.91, 0.96	<0.0001
	30 to 39	1.00	-		1.00	-	
	40 to 49	1.14	1.11, 1.17	<0.0001	1.07	1.05, 1.10	<0.0001
	50 to 54	1.20	1.15, 1.26	<0.0001	1.19	1.14, 1.24	<0.0001
	55 to 59	1.18	1.12, 1.25	<0.0001	1.15	1.09, 1.22	<0.0001
	60+	1.16	1.10, 1.23	<0.0001	1.12	1.05, 1.18	0.0002
Year of cART	1998, 1999	0.42	0.41, 0.44	<0.0001	0.48	0.47, 0.50	<0.0001
	2000, 2001	0.68	0.66, 0.69	<0.0001	0.70	0.68, 0.72	<0.0001
	2002, 2003	1.00	-		1.00	-	
	2004-2006	1.37	1.33, 1.42	<0.0001	1.38	1.34, 1.43	<0.0001
Baseline CD4	<100	0.86	0.84, 0.88	<0.0001	1.03	1.00, 1.06	0.03
	100-200	0.96	0.94, 0.99	0.007	1.00	0.98, 1.03	0.84
	200-350	1.00	-		1.00	-	
	350-500	0.81	0.79, 0.84	<0.0001	0.91	0.88, 0.94	<0.0001
	>500	0.77	0.75, 0.80	<0.0001	0.88	0.85, 0.92	<0.0001
Baseline VL	<5 log	1.17	1.15, 1.20	<0.0001	1.23	1.21, 1.26	<0.0001
	5-6	1.00	-		1.00	-	
	>6 log	0.86	0.82, 0.91	<0.0001	0.87	0.82, 0.92	<0.0001
AIDS	Yes	0.82	0.80, 0.84	<0.0001	0.86	0.83, 0.88	<0.0001
	No/unknown	1.00	-		1.00	-	
Gender	Male	0.95	0.93, 0.97	<0.0001	1.01	0.99, 1.03	0.46
	Female	1.00	-		1.00	-	
Origin	Africa	1.24	1.21, 1.28	<0.0001	1.13	1.09, 1.16	<0.0001
	Europe	1.00	-		1.00	-	
	Other/Unknown	1.19	1.16, 1.22	<0.0001	1.19	1.16, 1.22	<0.0001
Regimen	1 PI+2 NRTI	0.55	0.54, 0.57	<0.0001	0.75	0.73, 0.78	<0.0001
	1 NNRTI+2 NRTI	1.00	-		1.00	-	
	1 PI/RTV + 2 NRTI	1.04	1.01, 1.07	0.005	0.91	0.88, 0.94	<0.0001
	Other	0.92	0.89, 0.95	<0.0001	0.91	0.88, 0.93	<0.0001

Results from Cox proportional hazards model. Children aged 0 to <2 and 2 to <6 not included in model as CD4 cell counts differ for these age groups. Did not include mode of infection due to high co-linearity with age group. Disregarding treatment changes and discontinuations.

Figure 12- Time to first single viral load <400 copies/ml

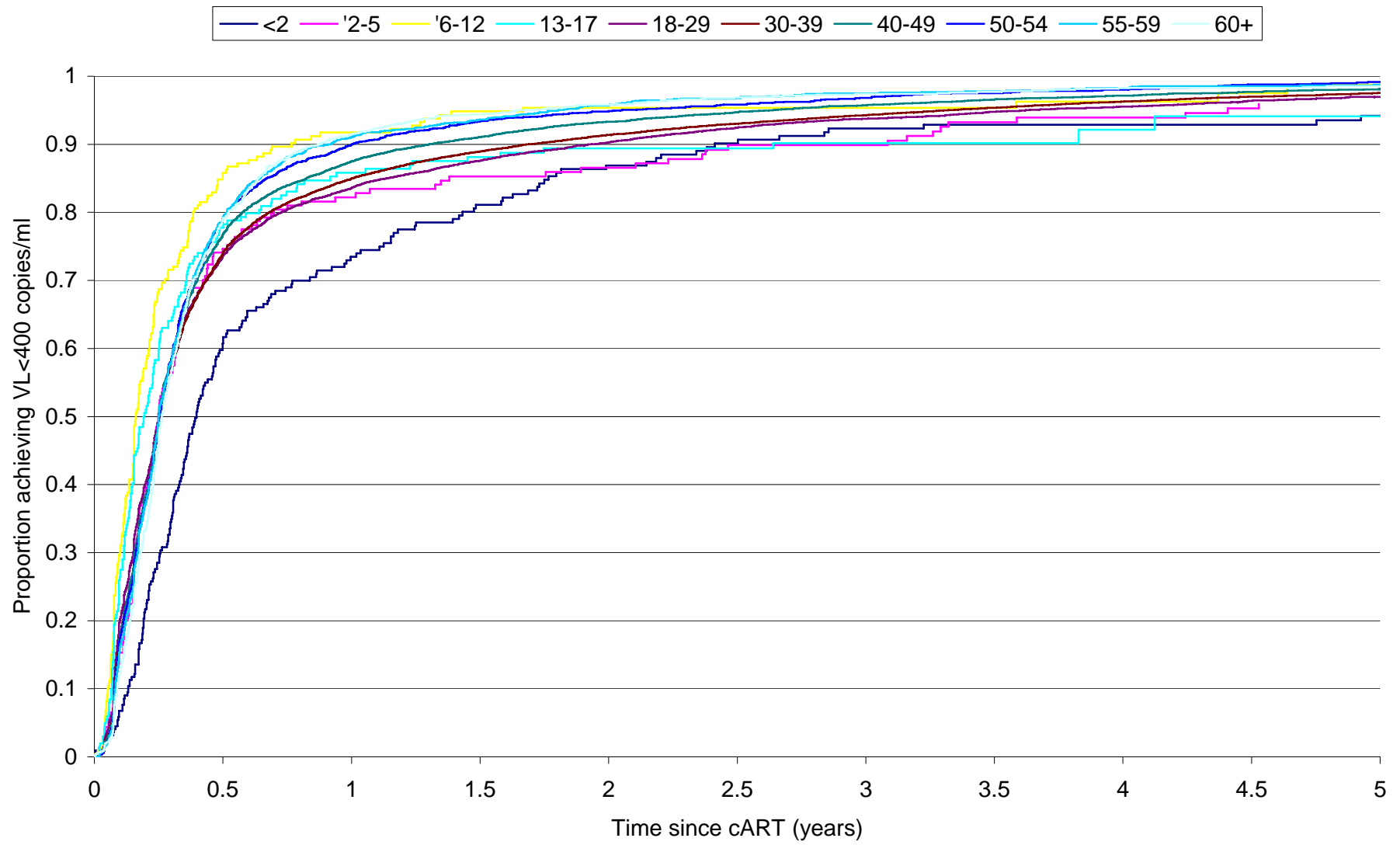


Table 13- Percentages achieving a single viral load <400 copies/ml according to age group

	Percentage (95% CI) achieving a viral load <400 copies/ml					Number with event	Number in group
	6 months	12 months	18 months	24 months	30 months		
<2	60.7 54.2, 67.3	73.5 67.5, 79.4	81.1 75.8, 86.5	86.9 82.2, 91.6	90.2 86.0, 94.3	200	223
2 to 5	74.7 68.2, 81.1	82.2 76.5, 87.9	85.3 80.0, 90.6	86.6 81.4, 91.7	89.9 85.3, 94.5	168	184
6 to 12	85.8 81.1, 90.4	91.7 87.9, 95.5	94.8 91.8, 97.9	95.3 92.4, 98.3	95.3 92.4, 98.3	208	219
13 to 17	77.7 71.9, 83.6	85.8 80.9, 90.8	88.1 83.5, 92.8	89.4 84.9, 93.9	89.4 84.9, 93.9	177	201
18 to 29	73.6 72.7, 74.5	83.6 82.8, 84.4	87.6 86.9, 88.3	90.3 89.6, 90.9	92.5 91.9, 93.1	8375	9134
30 to 39	74.1 73.5, 74.6	85.0 84.5, 85.5	88.9 88.5, 89.4	91.4 91.0, 91.8	93.0 92.7, 93.4	20751	22410
40 to 49	76.7 75.9, 77.5	87.5 86.9, 88.1	91.1 90.5, 91.6	93.3 92.8, 93.8	94.7 94.3, 95.2	10783	11588
50 to 54	79.0 77.4, 80.5	90.0 88.8, 91.1	93.3 92.4, 94.3	94.9 94.0, 95.8	95.8 95.0, 96.6	2548	2693
55 to 59	79.1 77.1, 81.1	91.1 89.6, 92.5	93.6 92.4, 94.9	95.8 94.7, 96.8	96.8 95.9, 97.7	1574	1656
60+	79.1 77.1, 81.1	91.1 89.6, 92.5	93.6 92.4, 94.9	95.8 94.7, 96.8	96.8 95.9, 97.7	1507	1613

Kaplan Meier estimates. Disregarding treatment changes and discontinuations

Table 14- Factors associated with achieving a single viral load <400 copies/ml

		Univariable analysis			Multivariable analysis		
		Hazard ratio	95% CI	p-value	Hazard ratio	95% CI	p-value
Age group	6 to 12	1.47	1.28, 1.69	<0.0001	1.26	1.10, 1.45	0.0008
	13 to 17	1.10	0.95, 1.28	0.21	0.95	0.82, 1.11	0.53
	18 to 29	0.99	0.97, 1.02	0.58	0.97	0.94, 0.99	0.009
	30 to 39	1.00	-		1.00	-	
	40 to 49	1.07	1.04, 1.09	<0.0001	1.04	1.01, 1.06	0.004
	50 to 54	1.12	1.08, 1.17	<0.0001	1.13	1.08, 1.17	<0.0001
	55 to 59	1.13	1.08, 1.19	<0.0001	1.13	1.07, 1.19	<0.0001
	60+	1.10	1.04, 1.16	0.0004	1.09	1.04, 1.15	0.0009
Year of cART	1998, 1999	0.64	0.62, 0.65	<0.0001	0.69	0.67, 0.71	<0.0001
	2000, 2001	0.85	0.83, 0.87	<0.0001	0.86	0.84, 0.89	<0.0001
	2002, 2003	1.00	-		1.00	-	
	2004-2006	1.24	1.21, 1.28	<0.0001	1.25	1.21, 1.29	<0.0001
Baseline CD4	<100	0.91	0.89, 0.93	<0.0001	1.08	1.05, 1.11	<0.0001
	100-200	0.96	0.94, 0.99	0.006	1.01	0.98, 1.04	0.50
	200-350	1.00	-		1.00	-	
	350-500	0.90	0.87, 0.93	<0.0001	0.97	0.94, 1.00	0.03
	>500	0.86	0.83, 0.89	<0.0001	0.92	0.89, 0.95	<0.0001
Baseline VL	<5 log	1.21	1.19, 1.23	<0.0001	1.25	1.22, 1.27	<0.0001
	5-6	1.00	-		1.00	-	
	>6 log	0.86	0.82, 0.90	<0.0001	0.86	0.82, 0.91	<0.0001
AIDS	Yes	0.84	0.82, 0.86	<0.0001	0.87	0.85, 0.89	<0.0001
	No/unknown	1.00	-		1.00	-	
Gender	Male	0.92	0.91, 0.94	<0.0001	0.97	0.95, 0.99	0.001
	Female	1.00	-		1.00	-	
Origin	Africa	1.15	1.12, 1.18	<0.0001	1.06	1.03, 1.09	<0.0001
	Europe	1.00	-		1.00	-	
	Other/Unknown	1.16	1.14, 1.19	<0.0001	1.16	1.13, 1.18	<0.0001
Regimen	1 PI+2 NRTI	0.67	0.65, 0.68	<0.0001	0.82	0.79, 0.84	<0.0001
	1 NNRTI+2 NRTI	1.00	-		1.00	-	
	1 PI/RTV + 2 NRTI	0.97	0.94, 0.99	0.008	0.92	0.89, 0.94	<0.0001
	Other	0.88	0.85, 0.90	<0.0001	0.88	0.86, 0.91	<0.0001

Results from Cox proportional hazards model. Children aged 0 to <2 and 2 to <6 not included in model as CD4 cell counts differ for these age groups. Did not include mode of infection due to high co-linearity with age group. Disregarding treatment changes and discontinuations.

Figure 15- Time to two consecutive viral loads <50 copies/ml

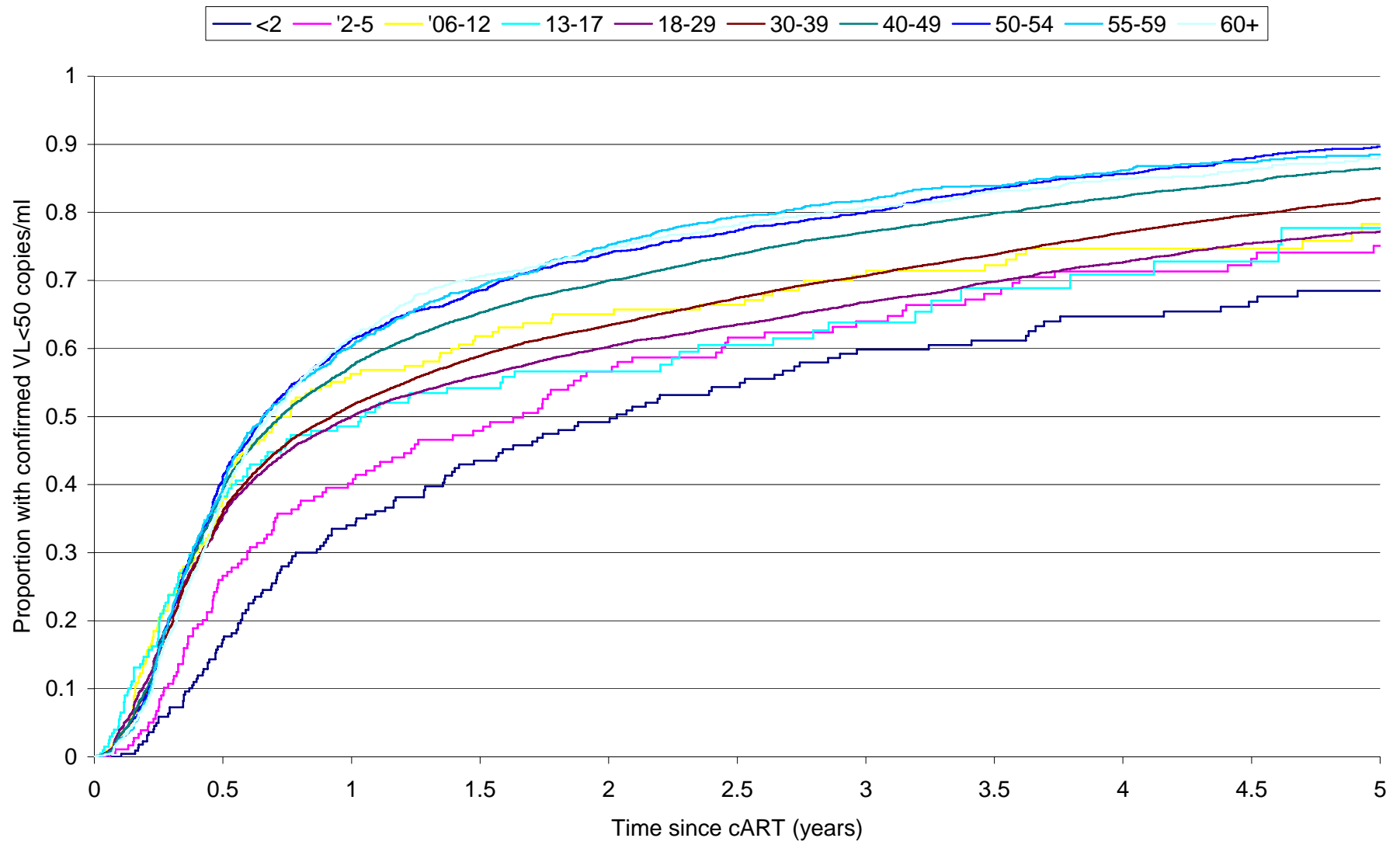


Table 16- Percentages achieving two consecutive viral load <50 copies/ml according to age group

	Percentage (95% CI) achieving a viral load <50 copies/ml					Number with event	Number in group
	6 months	12 months	18 months	24 months	30 months		
<2	17.2 12.1, 22.2	34.0 27.6, 40.5	43.5 36.7, 50.4	49.2 42.2, 56.2	54.3 47.3, 61.4	135	223
2 to 5	26.6 20.0, 33.2	40.2 32.7, 47.6	47.9 40.2, 55.5	56.6 48.9, 64.3	61.6 54.0, 69.3	120	184
6 to 12	37.9 31.2, 44.6	56.3 49.2, 63.4	61.8 54.8, 68.9	65.0 58.0, 72.0	66.4 59.4, 73.4	144	219
13 to 17	38.3 31.3, 45.3	45.6 41.2, 55.9	54.2 46.7, 61.7	56.6 49.0, 64.2	60.5 52.7, 68.3	115	201
18 to 29	35.4 34.4, 36.4	50.0 48.9, 51.1	56.0 54.9, 57.0	60.2 59.1, 61.3	63.5 62.4, 64.6	5818	9134
30 to 39	36.1 35.4, 36.7	51.6 51.0, 52.3	58.9 58.2, 59.6	63.4 62.7, 64.1	67.4 66.7, 68.1	15346	22410
40 to 49	39.3 38.4, 40.2	57.5 56.5, 58.4	65.3 64.3, 66.2	70.0 69.1, 70.9	73.8 72.9, 74.8	8171	11588
50 to 54	41.2 39.3, 43.1	61.4 59.4, 63.3	68.6 66.6, 70.5	74.0 72.2, 75.9	77.3 75.5, 79.1	2003	2693
55 to 59	39.4 37.0, 41.8	60.3 57.8, 62.8	69.0 66.6, 71.4	75.3 73.0, 77.6	79.4 77.2, 81.6	1245	1656
60+	38.6 36.1, 41.1	61.8 59.2, 64.4	70.7 68.2, 73.1	74.7 72.3, 77.1	78.1 75.8, 80.5	1146	1613

Kaplan Meier estimates. Disregarding treatment changes and discontinuations

Table 17- Factors associated with achieving two consecutive viral load <50 copies/ml

		Univariable analysis			Multivariable analysis		
		Hazard ratio	95% CI	p-value	Hazard ratio	95% CI	p-value
Age group	6 to 12	1.01	0.86, 1.19	0.91	0.87	0.74, 1.02	0.09
	13 to 17	0.93	0.77, 1.12	0.43	0.78	0.65, 0.94	0.01
	18 to 29	0.92	0.89, 0.95	<0.0001	0.90	0.88, 0.93	<0.0001
	30 to 39	1.00	-		1.00	-	
	40 to 49	1.16	1.13, 1.19	<0.0001	1.10	1.07, 1.13	<0.0001
	50 to 54	1.26	1.20, 1.32	<0.0001	1.24	1.19, 1.30	<0.0001
	55 to 59	1.27	1.20, 1.35	<0.0001	1.24	1.17, 1.32	<0.0001
	60+	1.23	1.15, 1.30	<0.0001	1.18	1.12, 1.26	<0.0001
Year of cART	1998, 1999	0.46	0.45, 0.47	<0.0001	0.53	0.52, 0.55	<0.0001
	2000, 2001	0.70	0.68, 0.72	<0.0001	0.73	0.71, 0.76	<0.0001
	2002, 2003	1.00	-		1.00	-	
	2004-2006	1.15	1.11, 1.19	<0.0001	1.15	1.11, 1.19	<0.0001
Baseline CD4	<100	0.91	0.88, 0.93	<0.0001	1.07	1.04, 1.10	<0.0001
	100-200	0.99	0.96, 1.02	0.68	1.03	1.00, 1.06	0.05
	200-350	1.00	-		1.00	-	
	350-500	0.81	0.79, 0.85	<0.0001	0.89	0.86, 0.93	<0.0001
	>500	0.77	0.74, 0.80	<0.0001	0.85	0.82, 0.89	<0.0001
Baseline VL	<5 log	1.13	1.11, 1.16	<0.0001	1.20	1.17, 1.22	<0.0001
	5-6	1.00	-		1.00	-	
	>6 log	0.85	0.80, 0.90	<0.0001	0.85	0.83, 0.88	<0.0001
AIDS	Yes	0.85	0.83, 0.87	<0.0001	0.85	0.83, 0.88	<0.0001
	No/unknown	1.00	-		1.00	-	
Gender	Male	1.00	0.97, 1.02	0.67	1.03	1.01, 1.11	0.01
	Female	1.00	-		1.00	-	
Origin	Africa	1.15	1.12, 1.19	<0.0001	1.07	1.04, 1.11	<0.0001
	Europe	1.00	-		1.00	-	
	Other/Unknown	1.15	1.12, 1.18	<0.0001	1.14	1.11, 1.17	<0.0001
Regimen	1 PI+2 NRTI	0.57	0.55, 0.58	<0.0001	0.72	0.70, 0.74	<0.0001
	1 NNRTI+2 NRTI	1.00	-		1.00	-	
	1 PI/RTV + 2 NRTI	1.01	0.98, 1.04	0.55	0.91	0.88, 0.93	<0.0001
	Other	0.89	0.86, 0.92	<0.0001	0.97	0.84, 0.90	<0.0001

Results from Cox proportional hazards model. Children aged 0 to <2 and 2 to <6 not included in model as CD4 cell counts differ for these age groups. Did not include mode of infection due to high co-linearity with age group. Disregarding treatment changes and discontinuations.

Figure 18- Time to two consecutive viral loads <400 copies/ml

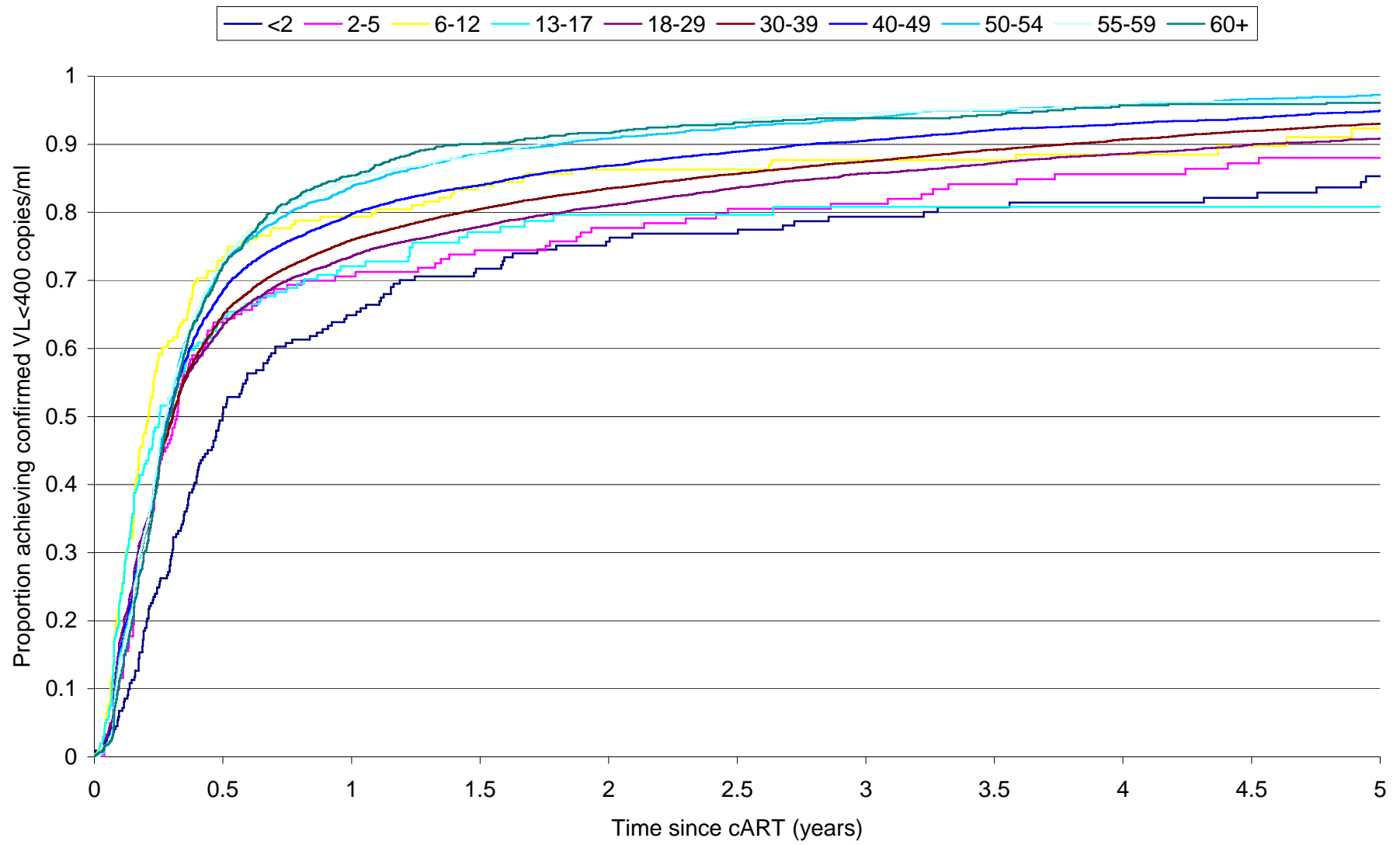


Table 19- Percentages achieving two consecutive viral load <400 copies/ml according to age group

	Percentage (95% CI) achieving a viral load <400 copies/ml					Number with event	Number in group
	6 months	12 months	18 months	24 months	30 months		
<2	50.1 43.7, 57.1	64.9 58.4, 71.4	71.7 65.5, 77.9	75.7 69.7, 81.7	76.9 70.9, 82.8	175	223
2 to 5	64.4 57.3, 71.6	70.6 63.7, 77.5	74.4 67.8, 81.1	77.7 71.4, 84.1	80.5 74.4, 86.7	150	184
6 to 12	73.4 67.3, 79.5	79.4 73.7, 85.0	83.9 78.7, 89.1	86.3 81.4, 91.2	86.3 81.4, 91.2	184	219
13 to 17	64.3 57.4, 71.1	72 65.6, 78.7	77.1 70.7, 83.4	79.6 73.4, 85.9	79.6 73.4, 85.9	149	201
18 to 29	63.4 62.4, 64.4	73.5 72.6, 74.5	77.9 76.9, 78.8	81.0 80.1, 81.9	83.6 82.8, 84.5	7319	9134
30 to 39	64.9 64.2, 65.5	75.9 75.4, 76.5	80.5 79.9, 81.0	83.5 83.0, 84.1	85.7 85.1, 86.2	18550	22410
40 to 49	68.4 67.6, 69.3	79.8 79.0, 80.5	84.0 83.3, 84.7	86.9 86.2, 87.6	88.9 88.3, 89.6	9693	11588
50 to 54	72.2 70.4, 73.9	83.7 82.3, 85.2	88.5 87.2, 89.8	90.9 89.6, 92.1	92.5 91.3, 93.7	2343	2693
55 to 59	72.4 70.2, 74.7	84.6 82.7, 86.5	88.4 86.7, 90.1	91.5 90.0, 93.0	93.5 93.1, 94.9	1442	1656
60+	72.2 69.9, 74.5	85.4 83.5, 87.3	90.0 88.4, 91.7	91.7 90.1, 93.3	93.2 91.7, 94.7	1363	1613

Kaplan Meier estimates. Disregarding treatment changes and discontinuations

Table 20- Factors associated with achieving two consecutive viral load <400 copies/ml

		Univariable analysis			Multivariable analysis		
		Hazard ratio	95% CI	p-value	Hazard ratio	95% CI	p-value
Age group	6 to 12	1.22	1.05, 1.41	0.008	1.10	0.95, 1.27	0.21
	13 to 17	0.98	0.83, 1.15	0.78	0.87	0.74, 1.02	0.08
	18 to 29	0.95	0.93, 0.98	0.0007	0.94	0.91, 0.96	<0.0001
	30 to 39	1.00	-		1.00	-	
	40 to 49	1.10	1.07, 1.12	<0.0001	1.07	1.04, 1.10	<0.0001
	50 to 54	1.20	1.15, 1.25	<0.0001	1.20	1.15, 1.26	<0.0001
	55 to 59	1.22	1.15, 1.28	<0.0001	1.21	1.14, 1.27	<0.0001
	60+	1.18	1.12, 1.24	<0.0001	1.17	1.11, 1.24	<0.0001
Year of cART	1998, 1999	0.64	0.62, 0.65	<0.0001	0.71	0.69, 0.73	<0.0001
	2000, 2001	0.85	0.83, 0.87	<0.0001	0.88	0.85, 0.90	<0.0001
	2002, 2003	1.00	-		1.00	-	
	2004-2006	1.05	1.02, 1.09	0.001	1.05	1.01, 1.08	0.007
Baseline CD4	<100	0.92	0.90, 0.95	<0.0001	1.07	1.04, 1.10	<0.0001
	100-200	0.99	0.96, 1.01	0.29	1.02	0.99, 1.05	0.16
	200-350	1.00	-		1.00	-	
	350-500	0.90	0.87, 0.93	<0.0001	0.95	0.92, 0.98	0.001
	>500	0.84	0.81, 0.87	<0.0001	0.88	0.85, 0.92	<0.0001
Baseline VL	<5 log	1.14	1.12, 1.17	<0.0001	1.18	1.15, 1.20	<0.0001
	5-6	1.00	-		1.00	-	
	>6 log	0.86	0.82, 0.91	<0.0001	0.87	0.82, 0.92	<0.0001
AIDS	Yes	0.84	0.82, 0.86	<0.0001	0.85	0.83, 0.87	<0.0001
	No/unknown	1.00	-		1.00	-	
Gender	Male	0.96	0.94, 0.99	0.0008	0.99	0.97, 1.01	0.36
	Female	1.00	-		1.00	-	
Origin	Africa	1.09	1.06, 1.12	<0.0001	1.04	1.01, 1.07	0.02
	Europe	1.00	-		1.00	-	
	Other/Unknown	1.13	1.10, 1.15	<0.0001	1.12	1.09, 1.14	<0.0001
Regimen	1 PI+2 NRTI	0.67	0.65, 0.69	<0.0001	0.79	0.77, 0.81	<0.0001
	1 NNRTI+2 NRTI	1.00	-		1.00	-	
	1 PI/RTV + 2 NRTI	0.97	0.94, 0.99	0.01	0.93	0.91, 0.96	<0.0001
	Other	0.89	0.86, 0.91	<0.0001	0.88	0.85, 0.91	<0.0001

Results from Cox proportional hazards model. Children aged 0 to <2 and 2 to <6 not included in model as CD4 cell counts differ for these age groups. Did not include mode of infection due to high co-linearity with age group. Disregarding treatment changes and discontinuations.

Figure 15 (a)- SENSITIVITY ANALYSIS - Time to two consecutive viral loads <50 copies/ml INCLUDING PATIENTS STARTING cART FROM 2000 ONWARDS

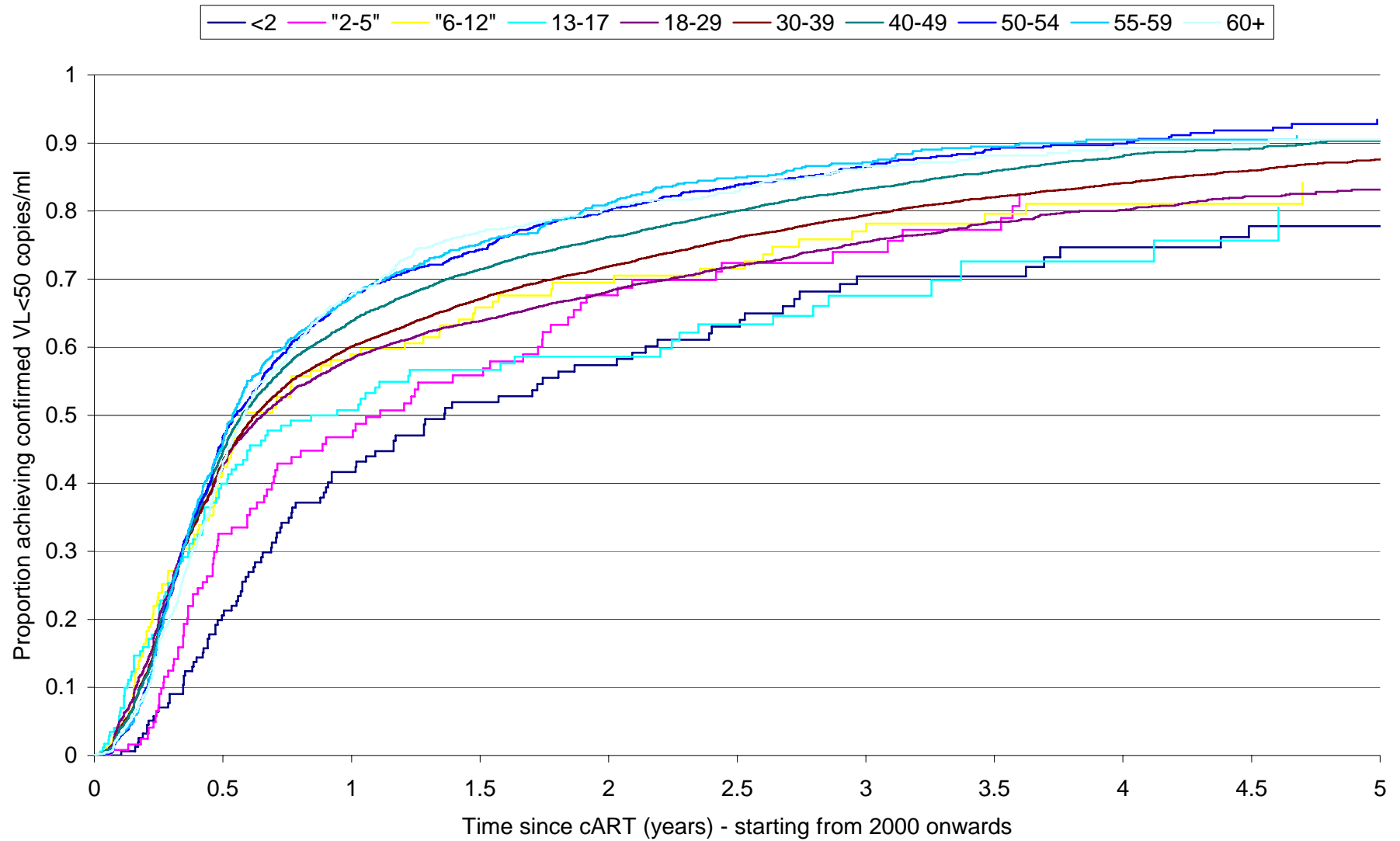


Table 16 (a) – SENSITIVITY ANALYSIS Percentages achieving two consecutive viral load <50 copies/ml according to age group INCLUDING PATIENTS STARTING cART FROM 2000 ONWARDS

	Percentage (95% CI) achieving a viral load <50 copies/ml					Number with event	Number in group
	6 months	12 months	18 months	24 months	30 months		
<2	20.6 14.9, 28.0	41.6 34.0, 50.2	51.9 43.8, 60.5	57.4 49.1, 65.9	63.0 54.6, 71.5	98	157
2 to 5	32.6 24.9, 41.9	46.8 38.0, 56.5	55.8 46.7, 65.4	67.6 58.4, 76.5	72.4 63.3, 80.8	83	127
6 to 12	42.3 34.9, 50.6	58.9 51.0, 67.1	65.8 57.8, 73.7	69.5 61.5, 77.2	71.6 63.5, 79.2	111	172
13 to 17	39.9 32.8, 48.0	50.7 43.0, 59.0	56.7 48.7, 64.9	58.6 50.5, 66.9	63.3 54.9, 71.7	99	173
18 to 29	49.8 41.3, 43.9	58.3 56.9, 59.6	63.8 62.5, 65.1	68.2 66.9, 69.5	72.0 70.6, 73.3	3996	6241
30 to 39	43.2 42.4, 44.0	60.1 59.3, 60.9	67.0 66.2, 67.9	71.9 71.0, 72.7	76.1 75.3, 76.9	10140	14845
40 to 49	44.7 43.6, 45.8	63.8 62.7, 65.0	71.4 70.4, 72.5	76.2 75.1, 77.2	80.0 79.0, 81.1	5960	8605
50 to 54	46.8 44.5, 49.1	67.9 65.6, 70.1	74.3 72.1, 76.5	80.2 78.0, 82.2	83.8 81.7, 85.8	1415	1935
55 to 59	45.9 43.0, 48.8	67.4 64.5, 70.3	75.1 72.4, 77.8	81.2 78.6, 83.7	85.0 82.4, 87.3	895	1209
60+	43.2 40.3, 46.3	67.8 64.8, 70.7	77.0 74.2, 79.8	80.6 77.8, 83.2	82.9 80.1, 85.5	817	1179

Kaplan Meier estimates. Disregarding treatment changes and discontinuations

Table 17 (a) – SENSITIVITY ANALYSIS Factors associated with achieving two consecutive viral load <50 copies/ml INCLUDING PATIENTS STARTING cART FROM 2000 ONWARDS

		Univariable analysis			Multivariable analysis		
		Hazard ratio	95% CI	p-value	Hazard ratio	95% CI	p-value
Age group	6 to 12	0.96	0.80, 1.16	0.67	0.89	0.74, 1.07	0.21
	13 to 17	0.80	0.66, 0.98	0.03	0.77	0.63, 0.94	0.009
	18 to 29	0.94	0.90, 0.97	0.0005	0.93	0.89, 0.96	<0.0001
	30 to 39	1.00	-		1.00	-	
	40 to 49	1.10	1.06, 1.13	<0.0001	1.08	1.05, 1.12	<0.0001
	50 to 54	1.18	1.11, 1.24	<0.0001	1.20	1.13, 1.27	<0.0001
	55 to 59	1.19	1.11, 1.27	<0.0001	1.20	1.12, 1.29	<0.0001
	60+	1.13	1.05, 1.22	0.0006	1.14	1.06, 1.22	0.0005
Year of cART	2000, 2001	0.72	0.70, 0.74	<0.0001	0.74	0.72, 0.76	<0.0001
	2002, 2003	1.00	-		1.00	-	
	2004-2006	1.14	1.10, 1.18	<0.0001	1.13	1.09, 1.18	<0.0001
Baseline CD4	<100	0.89	0.86, 0.92	<0.0001	1.08	1.01, 1.09	0.01
	100-200	0.97	0.94, 1.01	0.11	1.02	0.99, 1.09	0.26
	200-350	1.00	-		1.00	-	
	350-500	0.84	0.80, 0.88	<0.0001	0.88	0.84, 0.92	<0.0001
	>500	0.77	0.74, 0.82	<0.0001	0.82	0.78, 0.86	<0.0001
Baseline VL	<5 log	1.20	1.17, 1.23	<0.0001	1.25	1.21, 1.28	<0.0001
	5-6	1.00	-		1.00	-	
	>6 log	0.82	0.76, 0.88	<0.0001	0.83	0.77, 0.89	<0.0001
AIDS	Yes	0.86	0.84, 0.89	<0.0001	0.87	0.85, 0.90	<0.0001
	No/unknown	1.00	-		1.00	-	
Gender	Male	1.01	0.98, 1.03	0.74	1.02	0.99, 1.02	0.17
	Female	1.00	-		1.00	-	
Origin	Africa	1.07	1.03, 1.11	0.0004	1.07	1.03, 1.11	0.001
	Europe	1.00	-		1.00	-	
	Other/Unknown	1.13	1.09, 1.16	<0.0001	1.13	1.10, 1.17	<0.0001
Regimen	1 PI+2 NRTI	0.66	0.64, 0.69	<0.0001	0.73	0.70, 0.76	<0.0001
	1 NNRTI+2 NRTI	1.00	-		1.00	-	
	1 PI/RTV + 2 NRTI	0.91	0.88, 0.94	<0.0001	0.88	0.85, 0.91	<0.0001
	Other	0.83	0.80, 0.86	<0.0001	0.82	0.79, 0.85	<0.0001

Results from Cox proportional hazards model. Children aged 0 to <2 and 2 to <6 not included in model as CD4 cell counts differ for these age groups. Did not include mode of infection due to high co-linearity with age group. Disregarding treatment changes and discontinuations.

Table 21 – Viral load responses at 6 and 12 months

	Achieved viral load <50 copies/ml				Achieved viral load <400 copies/ml			
	6 months		12 months		6 months		12 months	
	M=F	M=E	M=F	M=E	M=F	M=E	M=F	M=E
<2	54/223 24.2%	54/192 28.1%	61/223 27.4%	61/168 36.3%	119/223 53.4%	119/192 62.0%	110/223 49.3%	110/168 65.5%
2 to 5	62/184 33.7%	62/149 41.6%	58/184 31.5%	58/139 41.7%	110/184 59.8%	110/149 73.8%	94/184 51.1%	94/139 67.6%
6 to 12	94/219 42.9%	94/178 52.8%	83/219 37.9%	83/151 55.0%	140/219 63.9%	140/178 78.7%	113/219 51.6%	113/151 74.8%
13 to 17	77/201 38.3%	77/157 49.0%	63/201 31.3%	63/134 47.0%	106/201 52.7%	106/157 67.5%	85/201 42.3%	85/134 63.4%
18 to 29	3460/9134 37.9%	3460/6827 50.7%	3174/9134 34.8%	3174/5968 53.2%	5197/9134 56.9%	5197/6827 76.1%	4441/9134 48.6%	4441/5968 74.4%
30 to 39	9009/22410 40.2%	9009/17180 52.4%	8814/22410 39.3%	8814/15388 57.3%	13755/22410 61.4%	13755/17180 80.1%	12197/22410 54.4%	12197/15388 79.3%
40 to 49	5144/11588 44.4%	5144/9076 56.7%	5008/11588 43.2%	5008/7954 63.0%	7495/11588 64.7%	7495/9076 82.6%	6590/11588 56.9%	6590/7954 82.9%
50 to 54	1267/2693 47.1%	1267/2185 58.0%	1271/2693 47.2%	1271/1922 66.1%	1872/2693 69.5%	1872/2185 85.7%	1646/2693 61.1%	1646/1922 85.6%
55 to 59	766/1656 46.3%	766/1331 57.6%	782/1656 47.2%	782/1198 65.3%	1149/1656 69.4%	1149/1331 86.3%	1048/1656 63.3%	1048/1198 87.5%
60+	730/1613 45.3%	730/1294 56.4%	750/1613 46.5%	750/1110 67.6%	1117/1613 69.3%	1117/1294 86.3%	973/1613 60.3%	973/1110 87.7%
p-value	<0.0001	<0.0001	<0.0001	<0.0001	<0.0001	<0.0001	<0.0001	<0.0001

Disregarding treatment changes and discontinuations. M=F: missing=failure; M=E:

missing=excluded. P-value from chi-squared test

Time points achieved by constructing a window two months either side of time point of interest.

Viral load measurement occurring in that window that occurred closest to the time point of interest

is taken. Individuals with no measurement in the window assumed to have a missing value.

Figure 22- Time to CD4 cell increase of >100 cells/mm³ since starting cART

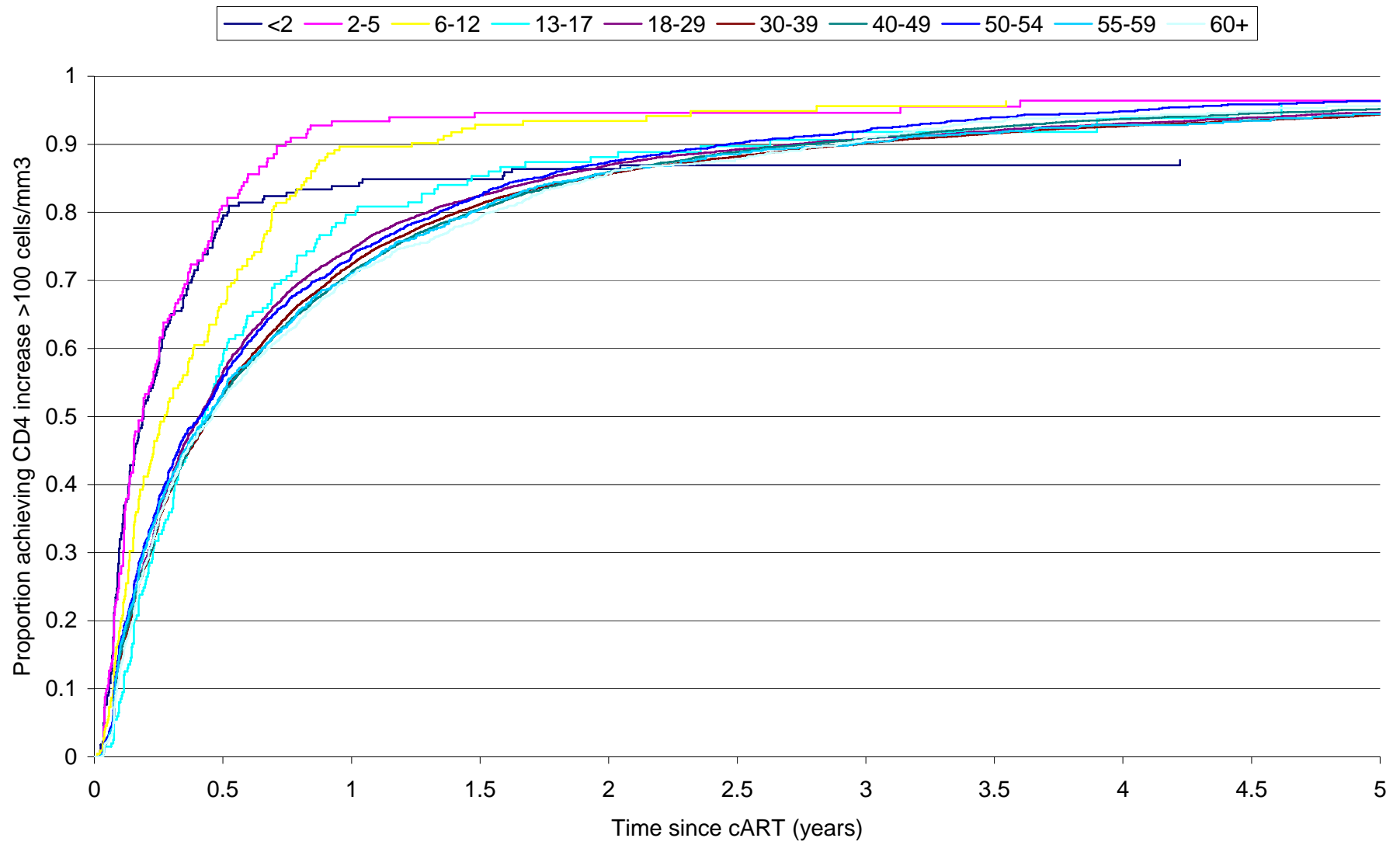


Table 23- Percentages achieving CD4 cell increase of >100 cells/mm³ since starting cART according to age group

	Percentage (95% CI) discontinued at least one ARV					Number with event	Number in group
	6 months	12 months	18 months	24 months	30 months		
<2	79.1 73.7, 84.5	83.9 78.9, 88.8	84.9 80.1, 89.7	86.4 81.8, 91.0	86.9 82.4, 91.5	191	223
2 to 5	81.0 75.2, 86.8	93.4 89.6, 97.1	94.6 91.2, 98.1	94.6 91.2, 98.1	94.6 91.2, 98.1	172	184
6 to 12	66.6 60.1, 73.0	89.7 85.4, 93.9	92.9 89.2, 96.5	93.4 89.9, 96.9	94.9 91.6, 98.1	196	219
13 to 17	58.1 51.1, 65.2	79.7 73.7, 85.6	85.3 80.0, 90.7	88.1 83.2, 93.1	89.7 84.9, 94.5	167	201
18 to 29	56.5 55.5, 57.5	74.6 73.7, 75.6	82.5 81.6, 83.3	87.0 86.2, 87.7	89.2 88.5, 90.0	7776	9134
30 to 39	53.3 52.7, 54.0	72.4 71.7, 73.0	81.2 80.7, 81.7	85.6 85.1, 86.1	88.2 87.7, 88.7	19004	22410
40 to 49	53.1 52.2, 54.0	71.3 70.4, 72.2	80.5 79.7, 81.3	85.9 85.2, 86.6	88.9 88.2, 89.5	9684	11588
50 to 54	55.8 53.9, 57.7	73.7 71.9, 75.4	82.4 80.9, 84.0	87.4 86.0, 88.8	90.2 88.9, 91.4	2307	2693
55 to 59	53.5 51.0, 55.9	71.0 68.7, 73.3	80.4 78.4, 82.5	85.8 83.9, 87.7	88.5 86.8, 90.3	1393	1656
60+	52.6 50.1, 55.1	70.7 68.3, 73.0	79.3 77.1, 81.4	85.7 83.7, 87.7	87.9 86.0, 89.7	1316	1613

Kaplan Meier estimates. Disregarding treatment changes and discontinuations

Table 24- Factors associated with CD4 cell increase of >100 cells/mm³ since starting cART

		Univariable analysis			Multivariable analysis		
		Hazard ratio	95% CI	p-value	Hazard ratio	95% CI	p-value
Age group	6 to 12	1.49	1.29, 1.71	<0.0001	1.51	1.31, 1.74	<0.0001
	13 to 17	1.08	0.92, 1.25	0.35	1.08	0.93, 1.26	0.32
	18 to 29	1.05	1.03, 1.08	0.0001	1.06	1.03, 1.09	<0.0001
	30 to 39	1.00	-		1.00	-	
	40 to 49	1.00	0.98, 1.03	0.85	0.97	0.94, 0.99	0.006
	50 to 54	1.08	1.04, 1.13	0.0005	1.04	1.00, 1.09	0.05
	55 to 59	1.00	0.95, 1.06	0.88	0.96	0.91, 1.01	0.13
	60+	0.99	0.93, 1.04	0.65	0.93	0.88, 0.98	0.01
Year of cART	1998, 1999	0.85	0.83, 0.87	<0.0001	0.90	0.87, 0.92	<0.0001
	2000, 2001	0.88	0.86, 0.91	<0.0001	0.91	0.88, 0.93	<0.0001
	2002, 2003	1.00	-		1.00	-	
	2004-2006	1.27	1.23, 1.31	<0.0001	1.24	1.20, 1.28	<0.0001
Baseline CD4	<100	0.93	0.91, 0.96	<0.0001	0.90	0.88, 0.93	<0.0001
	100-200	0.95	0.92, 0.97	<0.0001	0.93	0.91, 0.96	<0.0001
	200-350	1.00	-		1.00	-	
	350-500	0.93	0.90, 0.96	<0.0001	0.96	0.93, 0.99	0.008
	>500	0.70	0.67, 0.72	<0.0001	0.72	0.70, 0.75	<0.0001
Baseline VL	<5 log	0.76	0.75, 0.78	<0.0001	0.74	0.73, 0.76	<0.0001
	5-6	1.00	-		1.00	-	
	>6 log	1.22	1.16, 1.28	<0.0001	1.25	1.19, 1.32	<0.0001
AIDS	Yes	0.89	0.87, 0.91	<0.0001	0.85	0.83, 0.87	<0.0001
	No/unknown	1.00	-		1.00	-	
Gender	Male	1.01	0.98, 1.03	0.65	0.99	0.97, 1.02	0.52
	Female	1.00	-		1.00	-	
Origin	Africa	0.99	0.96, 1.02	0.47	0.94	0.91, 0.97	<0.0001
	Europe	1.00	-		1.00	-	
	Other/Unknown	1.02	1.00, 1.05	0.05	1.04	1.02, 1.07	0.0003
Regimen	1 PI+2 NRTI	0.87	0.85, 0.89	<0.0001	0.93	0.91, 0.96	<0.0001
	1 NNRTI+2 NRTI	1.00	-		1.00	-	
	1 PI/RTV + 2 NRTI	1.12	1.09, 1.15	<0.0001	1.05	1.02, 1.08	0.001
	Other	0.92	0.90, 0.95	<0.0001	0.94	0.91, 0.97	<0.0001

Results from Cox proportional hazards model. Children aged 0 to <2 and 2 to <6 not included in model as CD4 cell counts differ for these age groups. Did not include mode of infection due to high co-linearity with age group. Disregarding treatment changes and discontinuations.

Figure 25- Time to confirmed CD4 cell increase of >100 cells/mm³ since starting cART

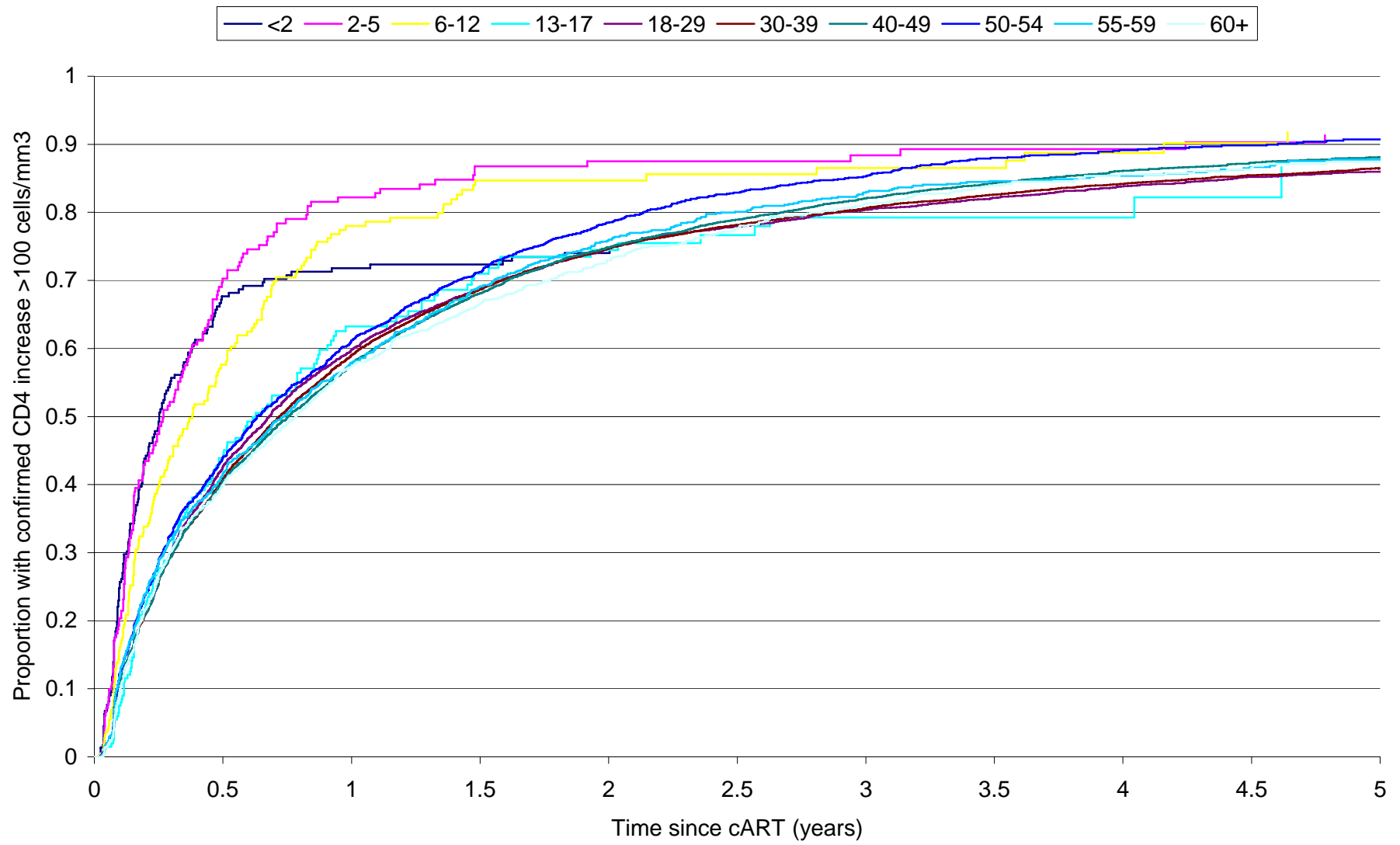


Table 26- Percentages achieving confirmed CD4 cell increase of >100 cells/mm³ since starting cART according to age group

	Percentage (95% CI) discontinued at least one ARV					Number with event	Number in group
	6 months	12 months	18 months	24 months	30 months		
<2	67.7 61.4, 73.9	71.8 65.7, 77.9	72.3 66.3, 78.4	74.0 68.0, 80.0	74.0 68.0, 80.0	161	223
2 to 5	70.3 63.4, 77.1	82.2 75.6, 87.5	86.8 82.5, 92.0	87.5 82.4, 92.6	87.5 82.4, 92.6	154	184
6 to 12	57.6 50.8, 64.4	78.0 72.0, 84.0	84.7 79.3, 90.1	84.7 79.3, 90.1	85.6 80.2, 91.0	171	219
13 to 17	43.9 36.7, 51.0	63.2 55.9, 70.6	71.0 63.8, 78.2	74.5 67.4, 81.6	76.7 69.5, 83.8	133	201
18 to 29	42.6 41.5, 43.6	59.8 58.7, 60.9	68.8 67.8, 69.9	74.8 73.8, 75.8	78.0 77.0, 78.9	6503	9134
30 to 39	40.9 40.2, 41.5	59.0 58.4, 59.7	68.7 68.0, 69.3	74.7 74.1, 75.3	78.1 77.5, 78.8	16228	22410
40 to 49	40.4 39.5, 41.3	57.8 56.9, 58.8	68.1 67.1, 69.0	74.9 73.9, 75.8	78.9 78.0, 79.8	8232	11588
50 to 54	44.0 42.1, 45.9	61.2 59.3, 63.2	71.2 69.4, 73.1	78.5 76.7, 80.3	82.9 81.2, 84.6	2028	2693
55 to 59	41.5 39.1, 44.0	57.9 55.4, 60.4	69.1 66.6, 71.5	75.9 73.6, 78.3	80.1 77.8, 82.3	1205	1656
60+	40.0 37.4, 42.3	57.4 54.8, 60.0	66.5 64.0, 69.1	72.9 70.4, 75.5	77.7 75.2, 80.1	1121	1613

Kaplan Meier estimates. Disregarding treatment changes and discontinuations

Table 27- Factors associated with confirmed CD4 cell increase of >100 cells/mm³ since starting cART

		Univariable analysis			Multivariable analysis		
		Hazard ratio	95% CI	p-value	Hazard ratio	95% CI	p-value
Age group	6 to 12	1.51	1.30, 1.76	<0.0001	1.61	1.39, 1.88	<0.0001
	13 to 17	1.03	0.87, 1.22	0.72	1.09	0.92, 1.29	0.33
	18 to 29	1.01	0.98, 1.04	0.61	1.05	1.02, 1.08	0.01
	30 to 39	1.00	-		1.00	-	
	40 to 49	1.01	0.98, 1.03	0.64	0.97	0.94, 0.99	0.02
	50 to 54	1.12	1.07, 1.17	<0.0001	1.07	1.02, 1.12	0.006
	55 to 59	1.04	0.98, 1.10	0.25	0.97	0.92, 1.03	0.31
	60+	0.99	0.93, 1.05	0.64	0.93	0.87, 0.98	0.01
Year of cART	1998, 1999	0.89	0.87, 0.92	<0.0001	0.96	0.93, 0.99	0.02
	2000, 2001	0.92	0.89, 0.95	<0.0001	0.95	0.92, 0.98	0.0004
	2002, 2003	1.00	-		1.00	-	
	2004-2006	1.09	1.05, 1.13	<0.0001	1.06	1.02, 1.10	0.002
Baseline CD4	<100	1.10	1.07, 1.13	<0.0001	1.04	1.01, 1.08	0.005
	100-200	1.02	0.99, 1.05	0.28	1.00	0.97, 1.03	0.83
	200-350	1.00	-		1.00	-	
	350-500	0.91	0.88, 0.94	<0.0001	0.92	0.89, 0.95	<0.0001
	>500	0.61	0.59, 0.64	<0.0001	0.62	0.60, 0.65	<0.0001
Baseline VL	<5 log	0.69	0.68, 0.71	<0.0001	0.71	0.70, 0.73	<0.0001
	5-6	1.00	-		1.00	-	
	>6 log	0.69	0.68, 0.71	<0.0001	1.22	1.16, 1.29	<0.0001
AIDS	Yes	0.96	0.94, 0.98	0.0009	0.84	0.82, 0.86	<0.0001
	No/unknown	1.00	-		1.00	-	
Gender	Male	1.04	1.02, 1.06	0.001	1.00	0.98, 1.02	0.94
	Female	1.00	-		1.00	-	
Origin	Africa	0.95	0.92, 0.98	0.0006	0.90	0.87, 0.93	<0.0001
	Europe	1.00	-		1.00	-	
	Other/Unknown	0.99	0.97, 1.01	0.41	1.00	0.98, 1.03	0.99
Regimen	1 PI+2 NRTI	0.92	0.89, 0.94	<0.0001	0.93	0.90, 0.95	<0.0001
	1 NNRTI+2 NRTI	1.00	-		1.00	-	
	1 PI/RTV + 2 NRTI	1.15	1.12, 1.18	<0.0001	1.06	1.03, 1.09	0.0002
	Other	0.94	0.91, 0.97	<0.0001	0.93	0.90, 0.96	<0.0001

Results from Cox proportional hazards model. Children aged 0 to <2 and 2 to <6 not included in model as CD4 cell counts differ for these age groups. Did not include mode of infection due to high co-linearity with age group. Disregarding treatment changes and discontinuations.

Table 28 – Median (range) of each individual’s mean change in CD4 cell count in first year of cART

	Median (IQR; range)	
	Number of CD4 count measurements in year	Mean change in CD4 cell count
<2	4 (3, 6)	+453 (+23, +930) [2 missing]
2 to 5	4 (3, 6)	+250 (+117, +414) [1 missing]
6 to 12	4 (3, 6)	+175 (+72, +267) [0 missing]
13 to 17	4 (3, 5)	+96 (+39, +164) [2 missing]
18 to 29	4 (3, 5)	+95 (+36, +170) [208 missing]
30 to 39	4 (3, 5)	+92 (+33, +163) [160 missing]
40 to 49	4 (3, 5)	+87 (+31, +157) [23 missing]
50 to 54	4 (3, 6)	+93 (+40, +164) [45 missing]
55 to 59	4 (3, 6)	+87 (+36, +160) [17 missing]
60+	4 (3, 5)	+81 (+31, +148) [23 missing]

Disregarding treatment changes and discontinuations. Those without any values in year not included

Figure 29- Time to first new AIDS/death

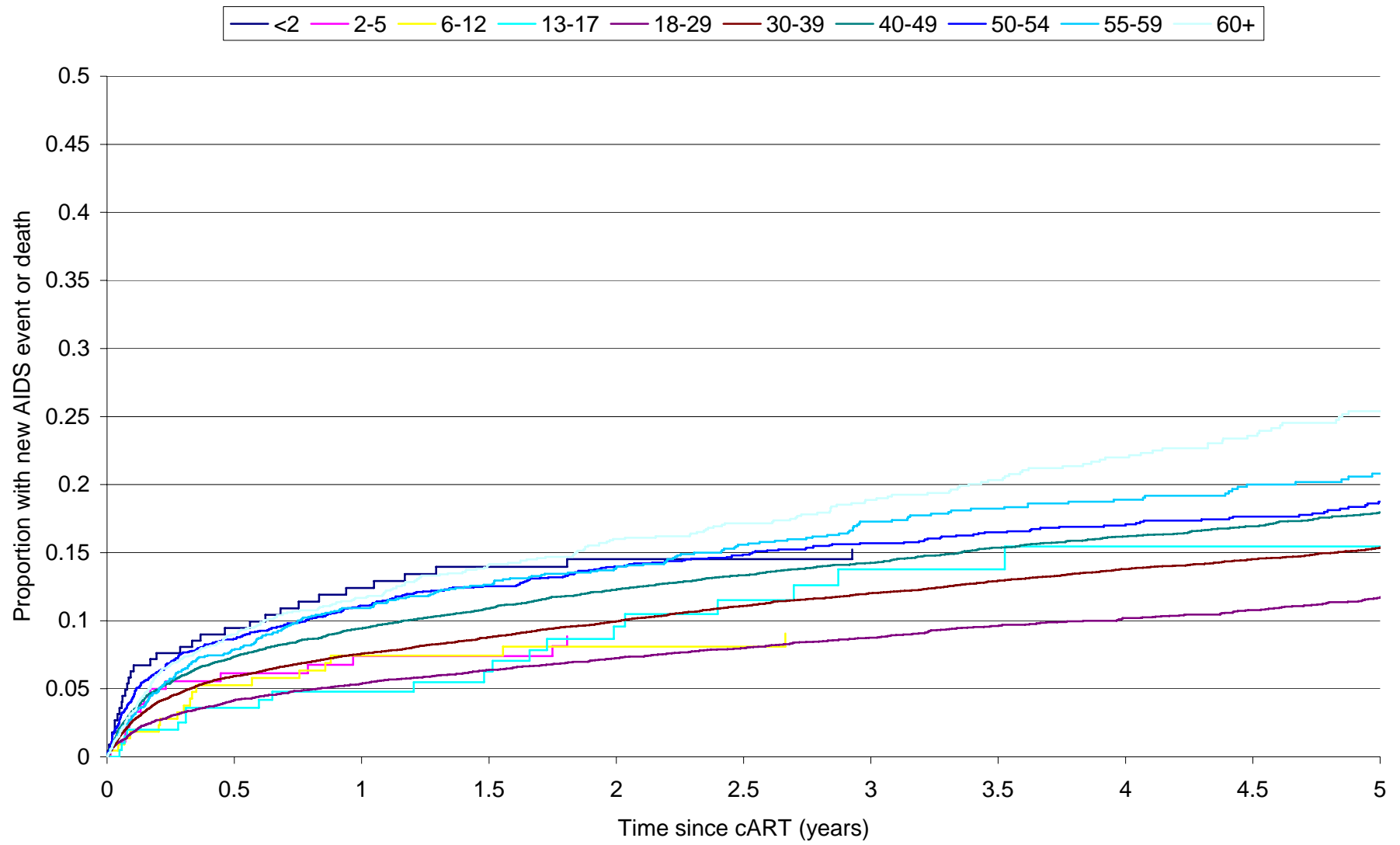


Table 30- Percentages experiencing first new AIDS/death

	Percentage (95% CI) discontinued at least one ARV					Number with event	Number in group
	6 months	12 months	18 months	24 months	30 months		
<2	9.5 5.6, 13.3	12.4 8.0, 16.8	14.0 9.3, 18.6	14.5 9.8, 19.3	14.5 9.8, 19.3	32	223
2 to 5	6.1 2.6, 9.7	7.4 3.5, 11.3	7.4 3.5, 11.3	8.9 4.5, 13.2	8.9 4.5, 13.2	15	184
6 to 12	5.3 2.2, 8.3	7.4 3.8, 11.1	7.4 3.8, 11.1	8.1 4.3, 11.9	8.1 4.3, 11.9	17	219
13 to 17	3.6 1.0, 6.2	4.8 1.7, 7.8	6.3 2.6, 9.9	9.6 4.8, 14.3	11.5 6.2, 16.8	21	201
18 to 29	4.2 3.7, 4.6	5.4 4.9, 5.9	6.4 5.9, 6.9	7.3 6.7, 7.8	8.0 7.4, 8.6	815	9134
30 to 39	5.9 5.6, 6.2	7.6 7.2, 7.9	8.8 8.4, 9.2	9.9 9.5, 10.4	11.1 10.6, 11.5	2788	22410
40 to 49	7.4 6.9, 7.8	9.4 8.9, 10.0	10.9 10.3, 11.5	12.3 11.6, 12.9	13.3 12.7, 14.0	1642	11588
50 to 54	8.7 7.6, 9.7	11.1 9.9, 12.3	12.5 11.2, 13.8	14.0 12.6, 15.4	14.9 13.4, 16.3	426	2693
55 to 59	7.9 6.5, 9.2	10.9 9.4, 12.5	12.6 11.0, 14.3	13.9 12.1, 15.6	15.6 13.7, 17.5	286	1656
60+	9.0 7.6, 10.4	11.7 10.1, 13.3	14.1 12.3, 15.9	16.0 14.1, 17.9	17.1 15.1, 19.2	313	1613

Kaplan Meier estimates. Disregarding treatment changes and discontinuations

Table 31- Factors associated with first new AIDS/death

		Univariable analysis			Multivariable analysis		
		Hazard ratio	95% CI	p-value	Hazard ratio	95% CI	p-value
Age group	6 to 12	0.66	0.41, 1.06	0.09	0.83	0.52, 1.34	0.45
	13 to 17	0.96	0.63, 1.48	0.87	0.75	0.49, 1.16	0.19
	18 to 29	0.73	0.67, 0.79	<0.0001	0.97	0.90, 1.06	0.52
	30 to 39	1.00	-		1.00	-	
	40 to 49	1.21	1.14, 1.28	<0.0001	1.07	1.01, 1.14	0.03
	50 to 54	1.32	1.19, 1.46	<0.0001	1.03	0.93, 1.14	0.59
	55 to 59	1.44	1.27, 1.62	<0.0001	1.19	1.05, 1.34	0.006
	60+	1.68	1.50, 1.89	<0.0001	1.34	1.19, 1.51	<0.0001
Year of cART	1998, 1999	0.90	0.93, 1.07	0.90	0.95	0.88, 1.03	0.21
	2000, 2001	1.02	0.95, 1.10	0.56	0.97	0.90, 1.04	0.33
	2002, 2003	1.00	-		1.00	-	
	2004-2006	0.89	0.81, 0.99	0.03	0.99	0.89, 1.09	0.81
Baseline CD4	<100	3.27	3.05, 3.49	<0.0001	0.93	0.87, 1.00	0.04
	100-200	1.54	1.42, 1.67	<0.0001	0.93	0.86, 1.01	0.08
	200-350	1.00	-		1.00	-	
	350-500	0.69	0.62, 0.77	<0.0001	0.82	0.73, 0.91	0.0005
	>500	0.64	0.56, 0.73	<0.0001	0.80	0.71, 0.91	0.0009
Baseline VL	<5 log	0.57	0.54, 0.60	<0.0001	0.97	0.92, 1.03	0.33
	5-6	1.00	-		1.00	-	
	>6 log	1.27	1.14, 1.41	<0.0001	0.96	0.86, 1.07	0.45
AIDS	Yes	22.73	21.15, 24.44	<0.0001	22.26	20.62, 24.03	<0.001
	No/unknown	1.00	-		1.00	-	
Gender	Male	1.16	1.10, 1.23	<0.0001	0.96	0.90, 1.02	0.22
	Female	1.00	-		1.00	-	
Origin	Africa	1.09	1.01, 1.17	0.02	1.06	0.98, 1.14	0.14
	Europe	1.00	-		1.00	-	
	Other/Unknown	0.86	0.81, 0.92	<0.0001	0.85	0.80, 0.90	<0.0001
Regimen	1 PI+2 NRTI	1.32	1.24, 1.41	<0.0001	0.99	0.92, 1.06	0.70
	1 NNRTI+2 NRTI	1.00	-		1.00	-	
	1 PI/RTV + 2 NRTI	1.55	1.44, 1.67	<0.0001	1.03	0.95, 1.11	0.49
	Other	1.33	1.23, 1.44	<0.0001	1.13	1.04, 1.22	0.003

Results from Cox proportional hazards model. Children aged 0 to <2 and 2 to <6 not included in model as CD4 cell counts differ for these age groups. Did not include mode of infection due to high co-linearity with age group. Disregarding treatment changes and discontinuations.